
Product Name: IDH2 Rabbit Monoclonal Antibody**Catalog #: AMRe02134**

For research use only.

Summary

Description	Recombinant rabbit monoclonal antibody
Host	Rabbit
Application	WB,IHC
Reactivity	Human,Mouse,Rat
Conjugation	Unconjugated
Modification	Unmodified
Isotype	IgG
Clonality	Monoclonal
Form	Liquid
Concentration	0.53mg/ml. The concentration of this product may be batch-dependent.
Storage	Aliquot and store at -20°C (valid for 12 months). Avoid freeze/thaw cycles.
Shipping	Ice bags
Buffer	50mM Tris-Glycine(pH 7.4), 0.15M NaCl, 40% Glycerol, 0.01% Sodium azide and 0.05% protective protein
Purification	Affinity Purification

Application

Dilution Ratio	WB 1:500-1:1000,IHC 1:50-1:100
Molecular Weight	Calculated MW: 51 kDa; Observed MW: 43 kDa

Antigen Information

Gene Name	IDH2
Alternative Names	IDH; IDP; IDHM; IDPM; ICD-M; D2HGA2; mNADP-IDH
Gene ID	3418
SwissProt ID	P48735
Immunogen	A synthetic peptide of human IDH2

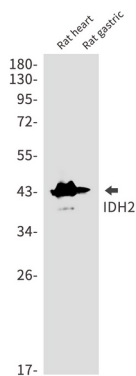
Background

Plays a role in intermediary metabolism and energy production. It may tightly associate or interact with the pyruvate dehydrogenase complex.

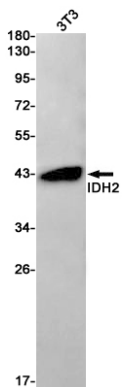
Research Area

Signal Transduction

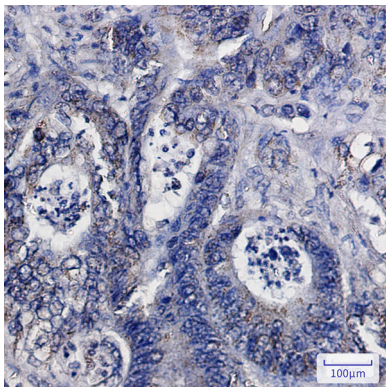
Image Data



Western blot analysis of IDH2 in rat heart, rat gastric lysates using IDH2 antibody.



Western blot analysis of IDH2 in 3T3 lysates using IDH2 antibody.



Immunohistochemistry analysis of paraffin-embedded Human colon cancer using IDH2 antibody. High-pressure and temperature Sodium Citrate pH 6.0 was used for antigen retrieval.