

Product Name: HP1 gamma Rabbit Monoclonal Antibody**Catalog #: AMRe02114**

For research use only.

Summary

Description	Recombinant rabbit monoclonal antibody
Host	Rabbit
Application	WB,IHC,IP
Reactivity	Human,Mouse,Rat
Conjugation	Unconjugated
Modification	Unmodified
Isotype	IgG
Clonality	Monoclonal
Form	Liquid
Concentration	0.64mg/ml. The concentration of this product may be batch-dependent.
Storage	Aliquot and store at -20°C (valid for 12 months). Avoid freeze/thaw cycles.
Shipping	Ice bags
Buffer	50mM Tris-Glycine(pH 7.4), 0.15M NaCl, 40% Glycerol, 0.01% Sodium azide and 0.05% protective protein
Purification	Affinity Purification

Application

Dilution Ratio	WB 1:500-1:1000,IHC 1:50-1:100,IP 1:20-1:50
Molecular Weight	Calculated MW: 21 kDa; Observed MW: 21 kDa

Antigen Information

Gene Name	Cbx3
Alternative Names	HECH; HP1-GAMMA; HP1Hs-gamma; CBX3
Gene ID	12417.0
SwissProt ID	P23198
Immunogen	A synthetic peptide of mouse HP1 gamma

Background

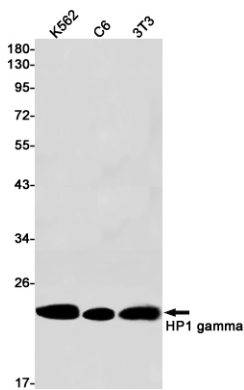
Component of heterochromatin. Recognizes and binds histone H3 tails methylated at 'Lys-9', leading to epigenetic repression. Probably involved in the repression of many genes located in euchromatin, such as E2F1, MYC and CDC25A. Involved in the

formation of functional kinetochore through interaction with MIS12 complex proteins. Contributes to the conversion of local chromatin to a heterochromatin-like repressive state through H3 'Lys-9' trimethylation, mediates the recruitment of the methyltransferases SUV39H1 and/or SUV39H2 by the PER complex to the E-box elements of the circadian target genes such as PER2 itself or PER1.

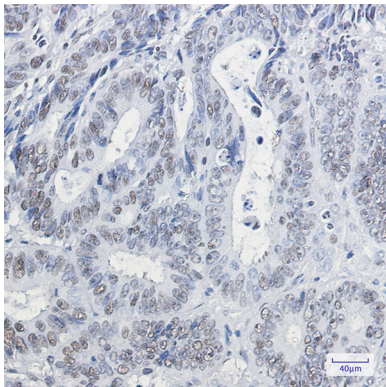
Research Area

Epigenetics and Nuclear Signaling

Image Data



Western blot analysis of HP1 gamma in K562, C6, 3T3 lysates using HP1 gamma antibody.



Immunohistochemistry analysis of paraffin-embedded Human colon cancer using HP1 gamma antibody. High-pressure and temperature Sodium Citrate pH 6.0 was used for antigen retrieval.