

---

**Product Name: HP1 alpha Rabbit Monoclonal Antibody****Catalog #: AMRe02113**

For research use only.

**Summary**

<b>Description</b>	Recombinant rabbit monoclonal antibody
<b>Host</b>	Rabbit
<b>Application</b>	WB,IHC,ICC/IF,IP
<b>Reactivity</b>	Human,Mouse,Rat
<b>Conjugation</b>	Unconjugated
<b>Modification</b>	Unmodified
<b>Isotype</b>	IgG
<b>Clonality</b>	Monoclonal
<b>Form</b>	Liquid
<b>Concentration</b>	0.45mg/ml. The concentration of this product may be batch-dependent.
<b>Storage</b>	Aliquot and store at -20°C (valid for 12 months). Avoid freeze/thaw cycles.
<b>Shipping</b>	Ice bags
<b>Buffer</b>	50mM Tris-Glycine(pH 7.4), 0.15M NaCl, 40% Glycerol, 0.01% Sodium azide and 0.05% protective protein
<b>Purification</b>	Affinity Purification

**Application**

<b>Dilution Ratio</b>	WB 1:500-1:1000,IHC 1:50-1:100,ICC/IF 1:50-1:200,IP 1:20-1:50
<b>Molecular Weight</b>	Calculated MW: 22 kDa; Observed MW: 22 kDa

**Antigen Information**

<b>Gene Name</b>	CBX5
<b>Alternative Names</b>	CBX5; HP1A; Chromobox protein homolog 5; Antigen p25; Heterochromatin protein 1 homolog alpha; HP1 alpha
<b>Gene ID</b>	23468
<b>SwissProt ID</b>	P45973
<b>Immunogen</b>	A synthetic peptide of human HP1 alpha

**Background**

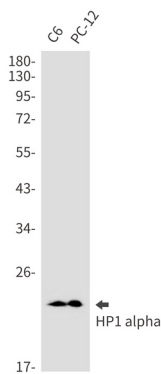
Component of heterochromatin that recognizes and binds histone H3 tails methylated at 'Lys-9' (H3K9me), leading to

epigenetic repression. In contrast, it is excluded from chromatin when 'Tyr-41' of histone H3 is phosphorylated (H3Y41ph). Can interact with lamin-B receptor (LBR). This interaction can contribute to the association of the heterochromatin with the inner nuclear membrane. Involved in the formation of functional kinetochore through interaction with MIS12 complex proteins.

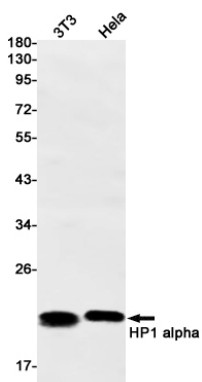
## Research Area

Epigenetics and Nuclear Signaling

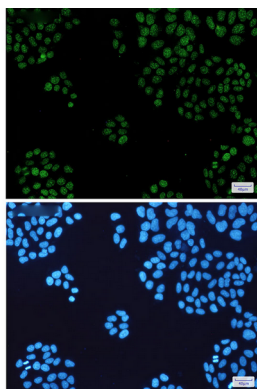
## Image Data



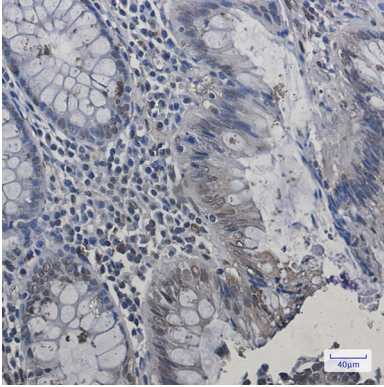
Western blot analysis of HP1 alpha in C6, PC-12 lysates using HP1 alpha antibody.



Western blot analysis of HP1 alpha in 3T3, HeLa lysates using HP1 alpha antibody.



Immunocytochemistry analysis of HP1 alpha (green) in HeLa using HP1 alpha antibody, and DAPI (blue)



Immunohistochemistry analysis of paraffin-embedded Human colon cancer using HP1 alpha antibody. High-pressure and temperature Sodium Citrate pH 6.0 was used for antigen retrieval.