

Product Name: HMGCL Rabbit Monoclonal Antibody**Catalog #: AMRe02099**

For research use only.

Summary

Description	Recombinant rabbit monoclonal antibody
Host	Rabbit
Application	WB
Reactivity	Human
Conjugation	Unconjugated
Modification	Unmodified
Isotype	IgG
Clonality	Monoclonal
Form	Liquid
Concentration	0.5mg/ml. The concentration of this product may be batch-dependent.
Storage	Aliquot and store at -20°C (valid for 12 months). Avoid freeze/thaw cycles.
Shipping	Ice bags
Buffer	50mM Tris-Glycine(pH 7.4), 0.15M NaCl, 40% Glycerol, 0.01% Sodium azide and 0.05% protective protein
Purification	Affinity Purification

Application

Dilution Ratio	WB 1:500-1:1000
Molecular Weight	Calculated MW: 34 kDa; Observed MW: 34 kDa

Antigen Information

Gene Name	HMGCL
Alternative Names	3-hydroxymethyl-3-methylglutaryl-CoA lyase; HL
Gene ID	3155
SwissProt ID	P35914
Immunogen	A synthetic peptide of human HMGCL

Background

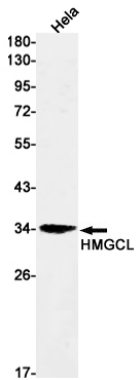
Key enzyme in ketogenesis (ketone body formation). Terminal step in leucine catabolism. Ketone bodies (beta-hydroxybutyrate, acetoacetate and acetone) are essential as an alternative source of energy to glucose, as lipid precursors and

as regulators of metabolism.

Research Area

Signal Transduction

Image Data



Western blot analysis of HMGCL in HeLa lysates using HMGCL antibody.