
Product Name: HLA A Rabbit Monoclonal antibody**Catalog #: AMRe02094**

For research use only.

Summary

| | |
|----------------------|--|
| Description | Recombinant rabbit monoclonal antibody |
| Host | Rabbit |
| Application | WB,IHC,ICC/IF,IP |
| Reactivity | Human |
| Conjugation | Unconjugated |
| Modification | Unmodified |
| Isotype | IgG |
| Clonality | Monoclonal Antibody |
| Form | Liquid |
| Concentration | 0.11mg/ml. The concentration of this product may be batch-dependent. |
| Storage | Aliquot and store at -20°C (valid for 12 months). Avoid freeze/thaw cycles. |
| Shipping | Ice bags |
| Buffer | 50mM Tris-Glycine(pH 7.4), 0.15M NaCl, 40% Glycerol, 0.01% Sodium azide and 0.05% protective protein |
| Purification | Affinity Purified |

Application

| | |
|-------------------------|---|
| Dilution Ratio | WB 1:500-1:1000,IHC 1:50-1:100,ICC/IF 1:50-1:200,IP 1:20-1:50 |
| Molecular Weight | Calculated MW: 41 kDa; Observed MW: 41 kDa |

Antigen Information

| | |
|--------------------------|---|
| Gene Name | HLA-A |
| Alternative Names | Aw-68; HLA class I histocompatibility antigen; A-28 alpha chain; MHC class I antigen A*68; HLA-A; MHC class I antigen HLA A heavy chain |
| Gene ID | 3105.0 |
| SwissProt ID | P04439 |
| Immunogen | A synthetic peptide of human HLA A |

Background

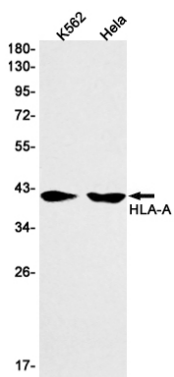
Major histocompatibility complex (MHC) molecules form an integral part of the immune response system. They are cell-surface

receptors that bind peptides and present them to T lymphocytes. HLA-A, -B and -C encode membrane anchored heavy chains which heterodimerize with a light chain (b-2-Microglobulin) to form MHC-I. Polymorphisms yield hundreds of HLA-A, -B and -C alleles.

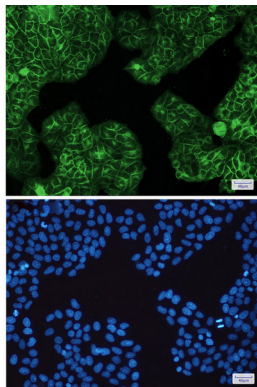
Research Area

Immunology

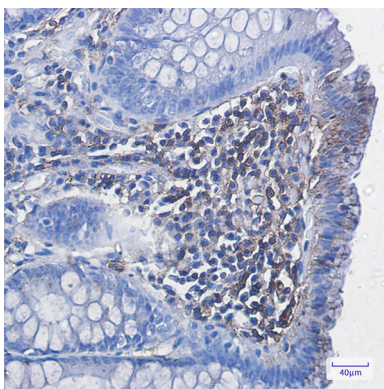
Image Data



Western blot analysis of HLAA in K562, HeLa lysates using HLA A antibody.



Immunocytochemistry analysis of HLA A (green) in HeLa using HLA A antibody, and DAPI (blue)



Immunohistochemistry analysis of paraffin-embedded Human colon cancer using HLA A antibody. High-pressure and temperature Sodium Citrate pH 6.0 was used for antigen retrieval.