
Product Name: HADHA Rabbit Monoclonal Antibody**Catalog #: AMRe02069**

For research use only.

Summary

Description	Recombinant rabbit monoclonal antibody
Host	Rabbit
Application	WB,ICC/IF,IP
Reactivity	Human
Conjugation	Unconjugated
Modification	Unmodified
Isotype	IgG
Clonality	Monoclonal
Form	Liquid
Concentration	0.64mg/ml. The concentration of this product may be batch-dependent.
Storage	Aliquot and store at -20°C (valid for 12 months). Avoid freeze/thaw cycles.
Shipping	Ice bags
Buffer	50mM Tris-Glycine(pH 7.4), 0.15M NaCl, 40% Glycerol, 0.01% Sodium azide and 0.05% protective protein
Purification	Affinity Purification

Application

Dilution Ratio	WB 1:500-1:1000,ICC/IF 1:50-1:200,IP 1:20-1:50
Molecular Weight	Calculated MW: 83 kDa; Observed MW: 78 kDa

Antigen Information

Gene Name	HADHA
Alternative Names	GBP; ECHA; HADH; LCEH; MTPA; LCHAD; TP-ALPHA
Gene ID	3030
SwissProt ID	P40939
Immunogen	A synthetic peptide of human HADHA

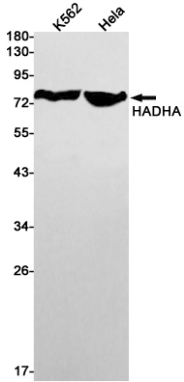
Background

Mitochondrial trifunctional enzyme catalyzes the last three of the four reactions of the mitochondrial beta-oxidation pathway.

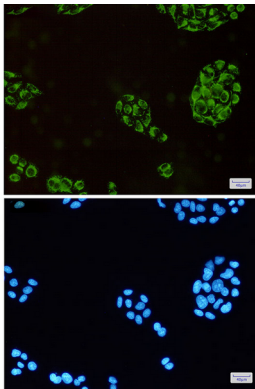
Research Area

Tags & Cell Markers

Image Data



Western blot analysis of HADHA in K562, HeLa lysates using HADHA antibody.



Immunocytochemistry analysis of HADHA(green) in HeLa using HADHA antibody, and DAPI(blue)