
Product Name: HADHA Rabbit Monoclonal Antibody**Catalog #: AMRe02068**

For research use only.

Summary

Description	Recombinant rabbit monoclonal antibody
Host	Rabbit
Application	WB,IHC,ICC/IF,IP
Reactivity	Human,Mouse,Rat
Conjugation	Unconjugated
Modification	Unmodified
Isotype	IgG
Clonality	Monoclonal
Form	Liquid
Concentration	0.53mg/ml. The concentration of this product may be batch-dependent.
Storage	Aliquot and store at -20°C (valid for 12 months). Avoid freeze/thaw cycles.
Shipping	Ice bags
Buffer	50mM Tris-Glycine(pH 7.4), 0.15M NaCl, 40% Glycerol, 0.01% Sodium azide and 0.05% protective protein
Purification	Affinity Purification

Application

Dilution Ratio	WB 1:500-1:1000,IHC 1:50-1:100,ICC/IF 1:50-1:200,IP 1:20-1:50
Molecular Weight	Calculated MW: 83 kDa; Observed MW: 78 kDa

Antigen Information

Gene Name	HADHA
Alternative Names	GBP; ECHA; HADH; LCEH; MTPA; LCHAD; TP-ALPHA
Gene ID	3030
SwissProt ID	P40939
Immunogen	A synthetic peptide of human HADHA

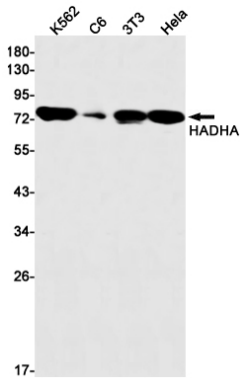
Background

Mitochondrial trifunctional enzyme catalyzes the last three of the four reactions of the mitochondrial beta-oxidation pathway.

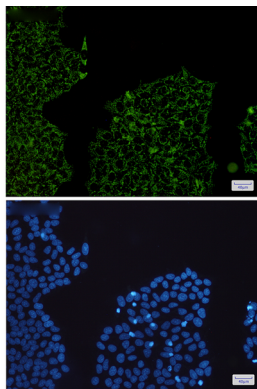
Research Area

Tags & Cell Markers

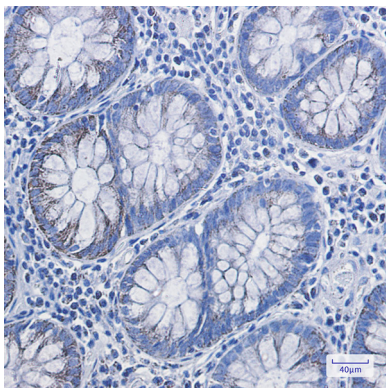
Image Data



Western blot analysis of HADHA in K562, C6, 3T3, HeLa lysates using HADHA antibody.



Immunocytochemistry analysis of HADHA (green) in HeLa using HADHA antibody, and DAPI (blue)



Immunohistochemistry analysis of paraffin-embedded Human colon cancer using HADHA antibody. High-pressure and temperature Sodium Citrate pH 6.0 was used for antigen retrieval.