

**Product Name: GSK3 alpha Rabbit Monoclonal antibody****Catalog #: AMRe02064**

For research use only.

**Summary**

|                      |  |
|----------------------|--|
| <b>Description</b>   | Recombinant rabbit monoclonal antibody   |
| <b>Host</b>          | Rabbit   |
| <b>Application</b>   | WB, ICC/IF, IP   |
| <b>Reactivity</b>    | Human, Mouse, Rat  |
| <b>Conjugation</b>   | Unconjugated   |
| <b>Modification</b>  | Unmodified   |
| <b>Isotype</b>       | IgG  |
| <b>Clonality</b>     | Monoclonal Antibody  |
| <b>Form</b>          | Liquid   |
| <b>Concentration</b> | 0.12mg/ml. The concentration of this product may be batch-dependent.                                 |
| <b>Storage</b>       | Aliquot and store at -20°C (valid for 12 months). Avoid freeze/thaw cycles.                          |
| <b>Shipping</b>      | Ice bags   |
| <b>Buffer</b>        | 50mM Tris-Glycine(pH 7.4), 0.15M NaCl, 40% Glycerol, 0.01% Sodium azide and 0.05% protective protein |
| <b>Purification</b>  | Affinity Purified  |

**Application**

|                         |  |
|-------------------------|--|
| <b>Dilution Ratio</b>   | WB 1:500-1:1000, ICC/IF 1:50-1:200, IP 1:20-1:50 |
| <b>Molecular Weight</b> | Calculated MW: 51 kDa; Observed MW: 51 kDa       |

**Antigen Information**

|                          |   |
|--------------------------|---|
| <b>Gene Name</b>         | GSK3A                                   |
| <b>Alternative Names</b> | Serine/threonine-protein kinase GSK3A   |
| <b>Gene ID</b>           | 2931                                    |
| <b>SwissProt ID</b>      | P49840                                  |
| <b>Immunogen</b>         | A synthetic peptide of human GSK3 alpha |

**Background**

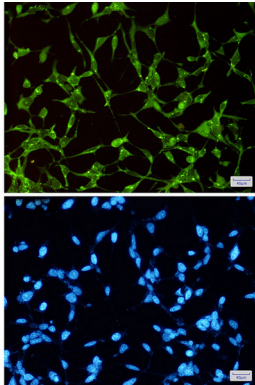
GSK3A a proline-directed protein kinase of the GSK family. Implicated in the control of several regulatory proteins including glycogen synthase, Myb, and c-Jun. GSK3 and GSK3 have similar functions. GSK3 phosphorylates tau, the principal component

of neurofibrillary tangles in Alzheimer disease and is required for maximal production of amyloid plaque peptides by secretase.

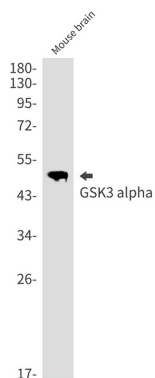
## Research Area

Neuroscience

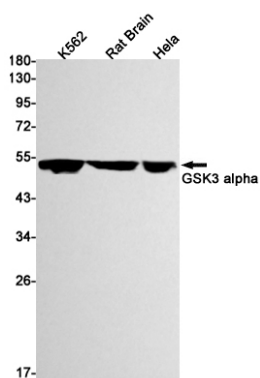
## Image Data



Immunocytochemistry analysis of GSK3 alpha (green) in 293t using GSK3 alpha antibody, and DAPI (blue).



Western blot analysis of GSK3 alpha in mouse brain lysates using GSK3 alpha antibody.



Western blot analysis of GSK3 alpha in K562, rat Brain, HeLa lysates using GSK3 alpha antibody