
Product Name: GPD2 Rabbit Monoclonal Antibody**Catalog #: AMRe02059**

For research use only.

Summary

Description	Recombinant rabbit monoclonal antibody
Host	Rabbit
Application	WB,IP
Reactivity	Human,Mouse,Rat
Conjugation	Unconjugated
Modification	Unmodified
Isotype	IgG
Clonality	Monoclonal
Form	Liquid
Concentration	0.64mg/ml. The concentration of this product may be batch-dependent.
Storage	Aliquot and store at -20°C (valid for 12 months). Avoid freeze/thaw cycles.
Shipping	Ice bags
Buffer	50mM Tris-Glycine(pH 7.4), 0.15M NaCl, 40% Glycerol, 0.01% Sodium azide and 0.05% protective protein
Purification	Affinity Purification

Application

Dilution Ratio	WB 1:500-1:1000,IP 1:20-1:50
Molecular Weight	Calculated MW: 81 kDa; Observed MW: 81 kDa

Antigen Information

Gene Name	GPD2
Alternative Names	GDH2; GPDM; mGPDH
Gene ID	2820
SwissProt ID	P43304
Immunogen	A synthetic peptide of human GPD2

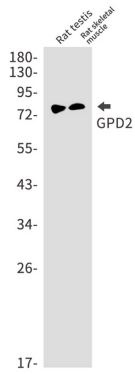
Background

Glycerol-3-phosphate dehydrogenase, mitochondrial

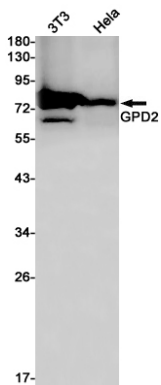
Research Area

Tags & Cell Markers

Image Data



Western blot analysis of GPD2 in rat testis, rat skeletal muscle lysates using GPD2 antibody.



Western blot analysis of GPD2 in K562, HeLa lysates using GPD2 antibody.