

Product Name: Glycogen Synthase 1 Rabbit Monoclonal Antibody**Catalog #: AMRe02048**

For research use only.

Summary

Description	Recombinant rabbit monoclonal antibody
Host	Rabbit
Application	WB, ICC/IF, IP
Reactivity	Human, Rat
Conjugation	Unconjugated
Modification	Unmodified
Isotype	IgG
Clonality	Monoclonal
Form	Liquid
Concentration	0.3mg/ml. The concentration of this product may be batch-dependent.
Storage	Aliquot and store at -20°C (valid for 12 months). Avoid freeze/thaw cycles.
Shipping	Ice bags
Buffer	50mM Tris-Glycine(pH 7.4), 0.15M NaCl, 40% Glycerol, 0.01% Sodium azide and 0.05% protective protein
Purification	Affinity Purification

Application

Dilution Ratio	WB 1:500-1:1000, ICC/IF 1:50-1:200, IP 1:20-1:50
Molecular Weight	Calculated MW: 84 kDa; Observed MW: 84 kDa

Antigen Information

Gene Name	GYS1
Alternative Names	GYS1; GYS; Glycogen [starch] synthase; muscle
Gene ID	2997
SwissProt ID	P13807
Immunogen	A synthetic peptide corresponding to target protein

Background

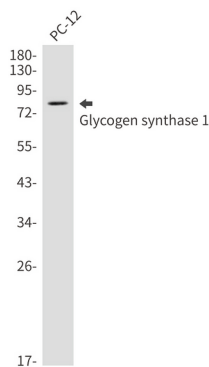
Transfers the glycosyl residue from UDP-Glc to the non-reducing end of alpha-1,4-glucan. Allosteric activation by glucose-6-phosphate. Phosphorylation reduces the activity towards UDP-glucose. When in the non-phosphorylated state, glycogen

synthase does not require glucose-6-phosphate as an allosteric activator; when phosphorylated it does.

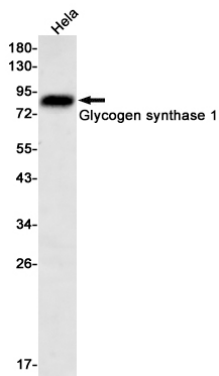
Research Area

Signal Transduction

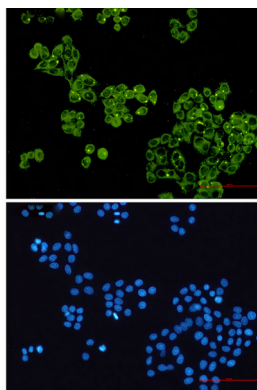
Image Data



Western blot analysis of Glycogen synthase 1 in PC-12 lysates using Glycogen Synthase 1 antibody.



Western blot analysis of Glycogen synthase 1 in HeLa lysates using Glycogen synthase 1 antibody.



Immunocytochemistry analysis of Glycogen synthase 1 (green) in HeLa using Glycogen synthase 1 antibody, and DAPI (blue)