

Product Name: GFPT2 Rabbit Monoclonal Antibody**Catalog #: AMRe02033**

For research use only.

Summary

Description	Recombinant rabbit monoclonal antibody
Host	Rabbit
Application	WB, ICC/IF, IP
Reactivity	Human, Mouse, Rat
Conjugation	Unconjugated
Modification	Unmodified
Isotype	IgG
Clonality	Monoclonal
Form	Liquid
Concentration	0.53mg/ml. The concentration of this product may be batch-dependent.
Storage	Aliquot and store at -20°C (valid for 12 months). Avoid freeze/thaw cycles.
Shipping	Ice bags
Buffer	50mM Tris-Glycine(pH 7.4), 0.15M NaCl, 40% Glycerol, 0.01% Sodium azide and 0.05% protective protein
Purification	Affinity Purification

Application

Dilution Ratio	WB 1:500-1:1000, ICC/IF 1:50-1:200, IP 1:20-1:50
Molecular Weight	Calculated MW: 77 kDa; Observed MW: 77 kDa

Antigen Information

Gene Name	GFPT2
Alternative Names	GFAT; GFAT2; GFAT 2
Gene ID	9945
SwissProt ID	O94808
Immunogen	Recombinant protein of human GFPT2

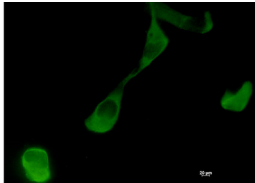
Background

Controls the flux of glucose into the hexosamine pathway. Most likely involved in regulating the availability of precursors for N- and O-linked glycosylation of proteins.

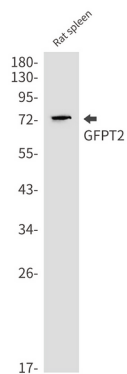
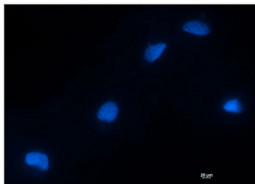
Research Area

Signal Transduction

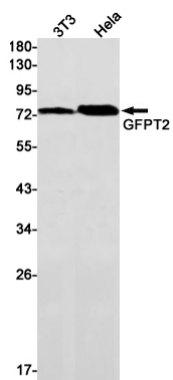
Image Data



Immunocytochemistry analysis of GFPT2 (green) in HT-1080 using GFPT2 antibody, and DAPI (blue).



Western blot analysis of GFPT2 in rat spleen lysates using GFPT2 antibody.



Western blot analysis of GFPT2 in 3T3, HeLa lysates using GFPT2 antibody