

**Product Name: Gelsolin Rabbit Monoclonal Antibody**  
**Catalog #: AMRe02027**



## Summary

<b>Production Name</b>	Gelsolin Rabbit Monoclonal Antibody
<b>Description</b>	Rabbit Monoclonal antibody
<b>Host</b>	Rabbit
<b>Application</b>	WB,IHC-P,IP
<b>Reactivity</b>	Human,Rat

## Performance

<b>Conjugation</b>	Unconjugated
<b>Modification</b>	Unmodified
<b>Isotype</b>	IgG
<b>Clonality</b>	Monoclonal
<b>Form</b>	Liquid
<b>Storage</b>	Store at 4°C short term. Aliquot and store at -20°C long term. Avoid freeze/thaw cycles.
<b>Buffer</b>	50mM Tris-Glycine(pH 7.4), 0.15M NaCl, 40% Glycerol, 0.01% Sodium azide and 0.05% protective protein
<b>Purification</b>	Affinity Purification

## Immunogen

<b>Gene Name</b>	GSN
<b>Alternative Names</b>	ADF; AGEL; Brevin; Gelsolin; Gsn
<b>Gene ID</b>	2934
<b>SwissProt ID</b>	P06396.

## Application

<b>Dilution Ratio</b>	WB: 1:500-1:1000 IHC: 1:50-1:100 IP: 1:20
<b>Molecular Weight</b>	Calculated MW: 86 kDa; Observed MW: 86 kDa

## Background

Calcium-regulated, actin-modulating protein that binds to the plus (or barbed) ends of actin monomers or filaments,

**Product Name: Gelsolin Rabbit Monoclonal Antibody**  
**Catalog #: AMRe02027**

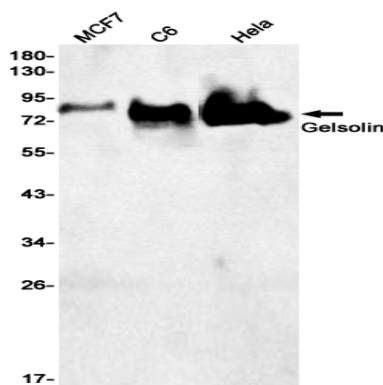


preventing monomer exchange (end-blocking or capping). It can promote the assembly of monomers into filaments (nucleation) as well as sever filaments already formed. Plays a role in ciliogenesis.

## Research Area

Signal Transduction

## Image Data



Western blot analysis of Gelsolin in MCF-7, C6, HeLa lysates using Gelsolin antibody.

## Note

For research use only.