

Product Name: Galectin 3 Rabbit Monoclonal Antibody**Catalog #: AMRe02020**

For research use only.

Summary

Description	Recombinant rabbit monoclonal antibody
Host	Rabbit
Application	WB,IHC,ICC/IF,IP
Reactivity	Human
Conjugation	Unconjugated
Modification	Unmodified
Isotype	IgG
Clonality	Monoclonal
Form	Liquid
Concentration	0.53mg/ml. The concentration of this product may be batch-dependent.
Storage	Aliquot and store at -20°C (valid for 12 months). Avoid freeze/thaw cycles.
Shipping	Ice bags
Buffer	50mM Tris-Glycine(pH 7.4), 0.15M NaCl, 40% Glycerol, 0.01% Sodium azide and 0.05% protective protein
Purification	Affinity Purification

Application

Dilution Ratio	WB 1:500-1:1000,IHC 1:50-1:100,ICC/IF 1:50-1:200,IP 1:20-1:50
Molecular Weight	Calculated MW: 26 kDa; Observed MW: 26 kDa

Antigen Information

Gene Name	LGALS3
Alternative Names	LGALS3
Gene ID	3958
SwissProt ID	P17931
Immunogen	A synthetic peptide of human Galectin 3

Background

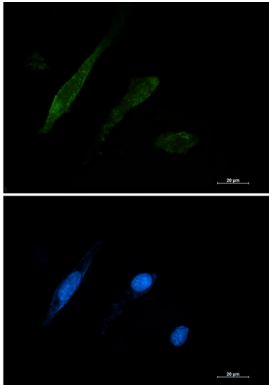
Galactose-specific lectin which binds IgE. May mediate with the alpha-3, beta-1 integrin the stimulation by CSPG4 of endothelial cells migration. Together with DMBT1, required for terminal differentiation of columnar epithelial cells during early

embryogenesis.

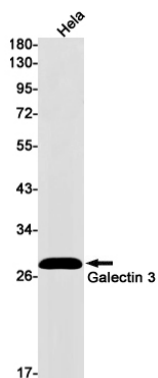
Research Area

Neuroscience

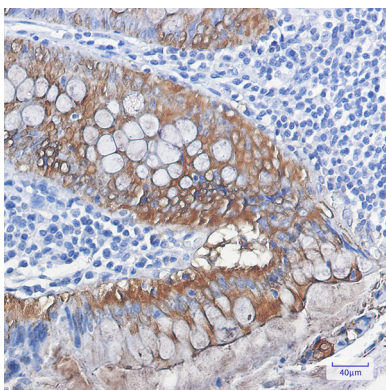
Image Data



Immunocytochemistry analysis of Galectin 3 (green) in U87-MG using Galectin 3 antibody, and DAPI (blue).



Western blot analysis of Galectin 3 in HeLa lysates using Galectin 3 antibody.



Immunohistochemistry analysis of paraffin-embedded Human colon cancer tissue using Galectin 3 antibody. High-pressure and temperature Sodium Citrate pH 6.0 was used for antigen retrieval.