

Product Name: EWSR1 Rabbit Monoclonal Antibody**Catalog #: AMRe01963**

For research use only.

Summary

Description	Recombinant rabbit monoclonal antibody
Host	Rabbit
Application	WB, ICC/IF
Reactivity	Human, Mouse, Rat
Conjugation	Unconjugated
Modification	Unmodified
Isotype	IgG
Clonality	Monoclonal
Form	Liquid
Concentration	0.3mg/ml. The concentration of this product may be batch-dependent.
Storage	Aliquot and store at -20°C (valid for 12 months). Avoid freeze/thaw cycles.
Shipping	Ice bags
Buffer	50mM Tris-Glycine(pH 7.4), 0.15M NaCl, 40% Glycerol, 0.01% Sodium azide and 0.05% protective protein
Purification	Affinity Purification

Application

Dilution Ratio	WB 1:500-1:1000, ICC/IF 1:50-1:200
Molecular Weight	Calculated MW: 68 kDa; Observed MW: 85 kDa

Antigen Information

Gene Name	EWSR1
Alternative Names	EWSR1; EWS; RNA-binding protein EWS; EWS oncogene; Ewing sarcoma breakpoint region 1 protein
Gene ID	2130
SwissProt ID	Q01844
Immunogen	A synthetic peptide of human EWSR1

Background

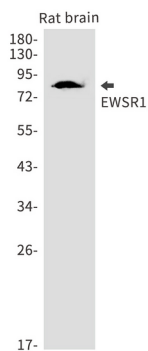
Might normally function as a repressor. EWS-fusion-proteins (EFPS) may play a role in the tumorigenic process. They may

disturb gene expression by mimicking, or interfering with the normal function of CTD-POLII within the transcription initiation complex.

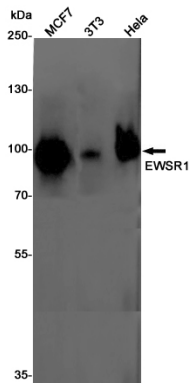
Research Area

Tags & Cell Markers

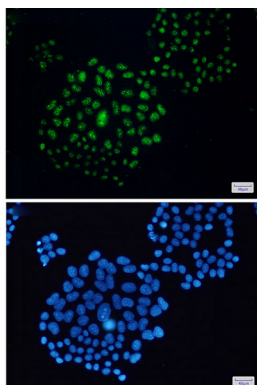
Image Data



Western blot analysis of EWSR1 in rat brain lysates using EWSR1 antibody.



Western blot analysis of EWSR1 in MCF-7, 3T3, HeLa lysates using EWSR1 antibody.



Immunocytochemistry analysis of EWSR1 (green) in HeLa using EWSR1 antibody, and DAPI (blue)