
Product Name: ENSA Rabbit Monoclonal Antibody**Catalog #: AMRe01950**

For research use only.

Summary

Description	Recombinant rabbit monoclonal antibody
Host	Rabbit
Application	WB
Reactivity	Human, Mouse, Rat
Conjugation	Unconjugated
Modification	Unmodified
Isotype	IgG
Clonality	Monoclonal
Form	Liquid
Concentration	0.5mg/ml. The concentration of this product may be batch-dependent.
Storage	Aliquot and store at -20°C (valid for 12 months). Avoid freeze/thaw cycles.
Shipping	Ice bags
Buffer	50mM Tris-Glycine(pH 7.4), 0.15M NaCl, 40% Glycerol, 0.01% Sodium azide and 0.05% protective protein
Purification	Affinity Purification

Application

Dilution Ratio	WB 1:500-1:1000
Molecular Weight	Calculated MW: 13 kDa; Observed MW: 13 kDa

Antigen Information

Gene Name	ENSA
Alternative Names	ARPP-19e
Gene ID	2029
SwissProt ID	O43768
Immunogen	A synthetic peptide of human ENSA

Background

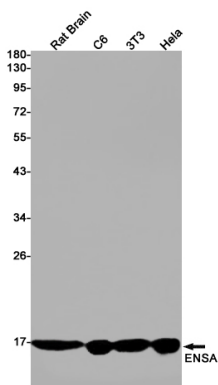
Protein phosphatase inhibitor that specifically inhibits protein phosphatase 2A (PP2A) during mitosis. When phosphorylated at Ser-67 during mitosis, specifically interacts with PPP2R2D (PR55-delta) and inhibits its activity, leading to inactivation of PP2A,

an essential condition to keep cyclin-B1-CDK1 activity high during M phase . Also acts as a stimulator of insulin secretion by interacting with sulfonylurea receptor (ABCC8), thereby preventing sulfonylurea from binding to its receptor and reducing K(ATP) channel currents.

Research Area

Neuroscience

Image Data



Western blot analysis of ENSA in rat Brain, C6, 3T3, HeLa lysates using ENSA antibody.