
Product Name: EN1 Rabbit Monoclonal Antibody**Catalog #: AMRe01947**

For research use only.

Summary

Description	Recombinant rabbit monoclonal antibody
Host	Rabbit
Application	WB,IP
Reactivity	Rat
Conjugation	Unconjugated
Modification	Unmodified
Isotype	IgG
Clonality	Monoclonal
Form	Liquid
Concentration	
Storage	Aliquot and store at -20°C (valid for 12 months). Avoid freeze/thaw cycles.
Shipping	Ice bags
Buffer	50mM Tris-Glycine(pH 7.4), 0.15M NaCl, 40% Glycerol, 0.01% Sodium azide and 0.05% protective protein
Purification	Affinity Purification

Application

Dilution Ratio	WB 1:500-1:1000,IP 1:20-1:50
Molecular Weight	Calculated MW: 40 kDa; Observed MW: 50 kDa

Antigen Information

Gene Name	EN1
Alternative Names	EN1; Engrailed 1; Engrailed; Hu-En-1; Mo-en.1
Gene ID	2019
SwissProt ID	Q05925
Immunogen	

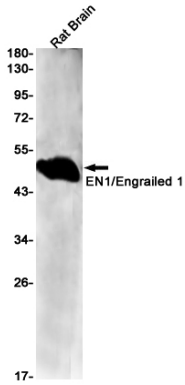
Background

Belongs to the engrailed homeobox family.

Research Area

Neuroscience

Image Data



Western blot analysis of EN1/Engrailed 1 in rat Brain lysates using EN1 antibody.