

Product Name: eIF3B Rabbit Monoclonal Antibody**Catalog #: AMRe01936**

For research use only.

Summary

| | |
|----------------------|--|
| Description | Recombinant rabbit monoclonal antibody |
| Host | Rabbit |
| Application | WB,IHC |
| Reactivity | Human |
| Conjugation | Unconjugated |
| Modification | Unmodified |
| Isotype | IgG |
| Clonality | Monoclonal |
| Form | Liquid |
| Concentration | 0.64mg/ml. The concentration of this product may be batch-dependent. |
| Storage | Aliquot and store at -20°C (valid for 12 months). Avoid freeze/thaw cycles. |
| Shipping | Ice bags |
| Buffer | 50mM Tris-Glycine(pH 7.4), 0.15M NaCl, 40% Glycerol, 0.01% Sodium azide and 0.05% protective protein |
| Purification | Affinity Purification |

Application

| | |
|-------------------------|---|
| Dilution Ratio | WB 1:500-1:1000,IHC 1:50-1:100 |
| Molecular Weight | Calculated MW: 92 kDa; Observed MW: 117 kDa |

Antigen Information

| | |
|--------------------------|------------------------------------|
| Gene Name | EIF3B |
| Alternative Names | eIF3b; EIF3S9; hPrt1; PRT1 |
| Gene ID | 8662 |
| SwissProt ID | P55884 |
| Immunogen | A synthetic peptide of human eIF3B |

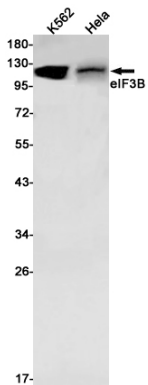
Background

Component of the eukaryotic translation initiation factor 3 (eIF-3) complex, which is required for several steps in the initiation of protein synthesis.

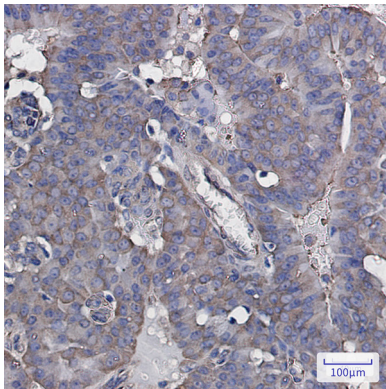
Research Area

Epigenetics and Nuclear Signaling

Image Data



Western blot analysis of eIF3B in K562, HeLa lysates using eIF3B antibody.



Immunohistochemistry analysis of paraffin-embedded Human breast cancer using eIF3B antibody. High-pressure and temperature Sodium Citrate pH 6.0 was used for antigen retrieval.