

Product Name: eIF1A Rabbit Monoclonal Antibody**Catalog #: AMRe01933**

For research use only.

Summary

Description	Recombinant rabbit monoclonal antibody
Host	Rabbit
Application	WB, ICC/IF, IP
Reactivity	Human, Mouse, Rat
Conjugation	Unconjugated
Modification	Unmodified
Isotype	IgG
Clonality	Monoclonal
Form	Liquid
Concentration	0.64mg/ml. The concentration of this product may be batch-dependent.
Storage	Aliquot and store at -20°C (valid for 12 months). Avoid freeze/thaw cycles.
Shipping	Ice bags
Buffer	50mM Tris-Glycine(pH 7.4), 0.15M NaCl, 40% Glycerol, 0.01% Sodium azide and 0.05% protective protein
Purification	Affinity Purification

Application

Dilution Ratio	WB 1:500-1:1000, ICC/IF 1:50-1:200, IP 1:20-1:50
Molecular Weight	Calculated MW: 16 kDa; Observed MW: 16 kDa

Antigen Information

Gene Name	EIF1AX
Alternative Names	EIF1A; EIF4C; eIF-1A; eIF-4C; EIF1AP1
Gene ID	1964
SwissProt ID	P47813
Immunogen	A synthetic peptide of human eIF1A

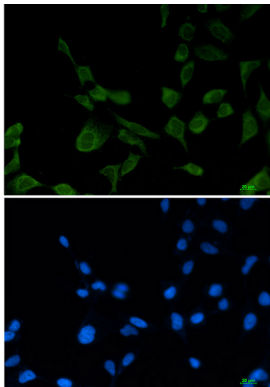
Background

Seems to be required for maximal rate of protein biosynthesis. Enhances ribosome dissociation into subunits and stabilizes the binding of the initiator Met-tRNA(I) to 40 S ribosomal subunits.

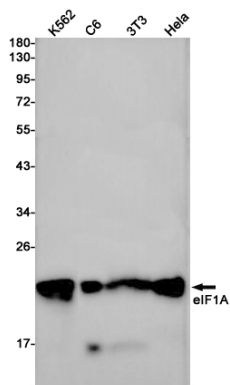
Research Area

Epigenetics and Nuclear Signaling

Image Data



Immunocytochemistry analysis of eIF1A (green) in 293T using eIF1A antibody, and DAPI (blue).



Western blot analysis of eIF1A in K562, C6, 3T3, HeLa lysates using eIF1A antibody.