
Product Name: DGCR8 Rabbit Monoclonal Antibody**Catalog #: AMRe01908**

For research use only.

Summary

Description	Recombinant rabbit monoclonal antibody
Host	Rabbit
Application	WB,ICC/IF,IP
Reactivity	Human,Mouse,Rat
Conjugation	Unconjugated
Modification	Unmodified
Isotype	IgG
Clonality	Monoclonal
Form	Liquid
Concentration	0.64mg/ml. The concentration of this product may be batch-dependent.
Storage	Aliquot and store at -20°C (valid for 12 months). Avoid freeze/thaw cycles.
Shipping	Ice bags
Buffer	50mM Tris-Glycine(pH 7.4), 0.15M NaCl, 40% Glycerol, 0.01% Sodium azide and 0.05% protective protein
Purification	Affinity Purification

Application

Dilution Ratio	WB 1:500-1:1000,ICC/IF 1:50-1:200,IP 1:20-1:50
Molecular Weight	Calculated MW: 86 kDa; Observed MW: 120 kDa

Antigen Information

Gene Name	DGCR8
Alternative Names	DGCR8; DGCRK6; Gy1; C22orf12; D16Wis2; pasha
Gene ID	54487
SwissProt ID	Q8WYQ5
Immunogen	Recombinant protein of human DGCR8

Background

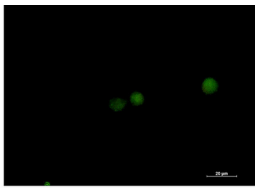
Component of the microprocessor complex that is required to process primary miRNA transcripts (pri-miRNAs) to release precursor miRNA (pre-miRNA) in the nucleus. Within the microprocessor complex, DGCR8 function as a molecular anchor

necessary for the recognition of pri-miRNA at dsRNA-ssRNA junction and directs DROSHA to cleave 11 bp away from the junction to release hairpin-shaped pre-miRNAs that are subsequently cut by the cytoplasmic DICER to generate mature miRNAs.

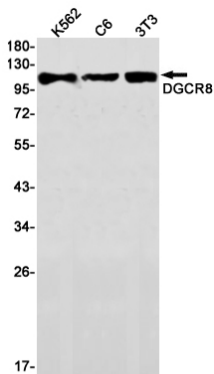
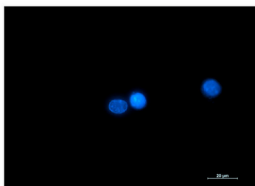
Research Area

Epigenetics and Nuclear Signaling

Image Data



Immunocytochemistry analysis of DGCR8 (green) in K562 using DGCR8 antibody, and DAPI (blue).



Western blot analysis of DGCR8 in K562, C6, 3T3 lysates using DGCR8 antibody.