

---

**Product Name: DCI Rabbit Monoclonal Antibody****Catalog #: AMRe01897**

For research use only.

**Summary**

<b>Description</b>	Recombinant rabbit monoclonal antibody
<b>Host</b>	Rabbit
<b>Application</b>	WB,IHC,ICC/IF
<b>Reactivity</b>	Human,Mouse,Rat
<b>Conjugation</b>	Unconjugated
<b>Modification</b>	Unmodified
<b>Isotype</b>	IgG
<b>Clonality</b>	Monoclonal
<b>Form</b>	Liquid
<b>Concentration</b>	0.5mg/ml. The concentration of this product may be batch-dependent.
<b>Storage</b>	Aliquot and store at -20°C (valid for 12 months). Avoid freeze/thaw cycles.
<b>Shipping</b>	Ice bags
<b>Buffer</b>	50mM Tris-Glycine(pH 7.4), 0.15M NaCl, 40% Glycerol, 0.01% Sodium azide and 0.05% protective protein
<b>Purification</b>	Affinity Purification

**Application**

<b>Dilution Ratio</b>	WB 1:500-1:1000,IHC 1:50-1:100,ICC/IF 1:50-1:200
<b>Molecular Weight</b>	Calculated MW: 33 kDa; Observed MW: 33 kDa

**Antigen Information**

<b>Gene Name</b>	ECI1 ECI1; DCI; Enoyl-CoA delta isomerase 1; mitochondrial; 3; 2-trans-enoyl-CoA isomerase;
<b>Alternative Names</b>	Delta(3); Delta(2)-enoyl-CoA isomerase; D3; D2-enoyl-CoA isomerase; Dodecenoyl-CoA isomerase
<b>Gene ID</b>	1632
<b>SwissProt ID</b>	P42126
<b>Immunogen</b>	A synthetic peptide of human DCI

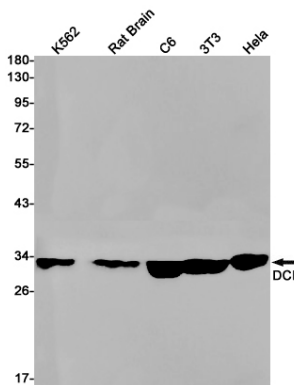
**Background**

Able to isomerize both 3-cis and 3-trans double bonds into the 2-trans form in a range of enoyl-CoA species.

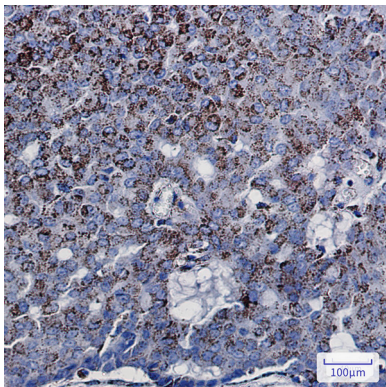
## Research Area

Tags & Cell Markers

## Image Data



Western blot analysis of DCI in K562, rat Brain, C6, 3T3, HeLa lysates using DCI antibody.



Immunohistochemistry analysis of paraffin-embedded Human breast cancer using DCI antibody. High-pressure and temperature Sodium Citrate pH 6.0 was used for antigen retrieval.