
Product Name: Cytochrome P450 Reductase Rabbit Monoclonal antibody**Catalog #: AMRe01883**

For research use only.

Summary

Description	Recombinant rabbit monoclonal antibody
Host	Rabbit
Application	WB,IHC,ICC/IF
Reactivity	Human,Mouse,Rat
Conjugation	Unconjugated
Modification	Unmodified
Isotype	IgG
Clonality	Monoclonal Antibody
Form	Liquid
Concentration	0.16mg/ml. The concentration of this product may be batch-dependent.
Storage	Aliquot and store at -20°C (valid for 12 months). Avoid freeze/thaw cycles.
Shipping	Ice bags
Buffer	50mM Tris-Glycine(pH 7.4), 0.15M NaCl, 40% Glycerol, 0.01% Sodium azide and 0.05% protective protein
Purification	Affinity Purified

Application

Dilution Ratio	WB 1:500-1:1000,IHC 1:50-1:100,ICC/IF 1:50-1:200
Molecular Weight	Calculated MW: 77 kDa; Observed MW: 77 kDa

Antigen Information

Gene Name	POR
Alternative Names	CPR; CYPOR; P450R; por
Gene ID	5447
SwissProt ID	P16435
Immunogen	A synthetic peptide of human Cytochrome P450 Reductase

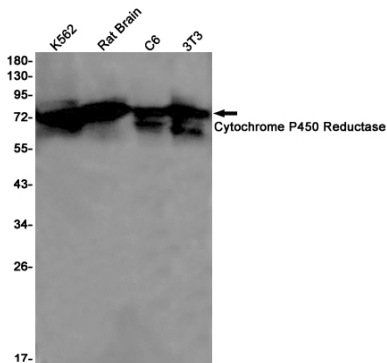
Background

This enzyme is required for electron transfer from NADP to cytochrome P450 in microsomes. It can also provide electron transfer to heme oxygenase and cytochrome B5.

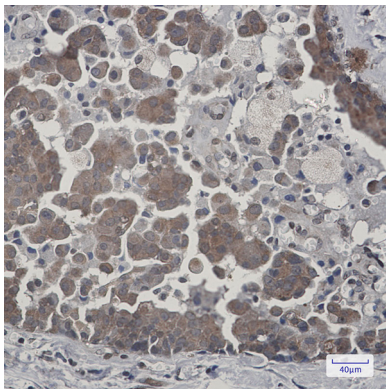
Research Area

Cardiovascular

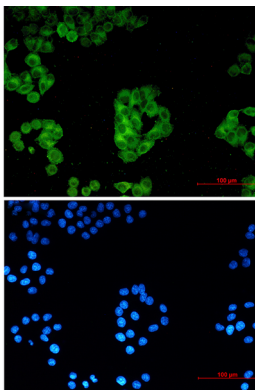
Image Data



Western blot analysis of Cytochrome P450 Reductase in K562, rat Brain, C6, 3T3 lysates using Cytochrome P450 Reductase antibody.



Immunohistochemistry analysis of paraffin-embedded Human breast cancer using Cytochrome P450 Reductase antibody. High-pressure and temperature Sodium Citrate pH 6.0 was used for antigen retrieval.



Immunocytochemistry analysis of Cytochrome P450 Reductase (green) in HeLa using Cytochrome P450 Reductase antibody, and DAPI (blue)