
Product Name: Cytochrome C Rabbit Monoclonal Antibody**Catalog #: AMRe01881**

For research use only.

Summary

Description	Recombinant rabbit monoclonal antibody
Host	Rabbit
Application	WB,ICC/IF,IP
Reactivity	Human,Mouse,Rat
Conjugation	Unconjugated
Modification	Unmodified
Isotype	IgG
Clonality	Monoclonal
Form	Liquid
Concentration	0.63mg/ml. The concentration of this product may be batch-dependent.
Storage	Aliquot and store at -20°C (valid for 12 months). Avoid freeze/thaw cycles.
Shipping	Ice bags
Buffer	50mM Tris-Glycine(pH 7.4), 0.15M NaCl, 40% Glycerol, 0.01% Sodium azide and 0.05% protective protein
Purification	Affinity Purification

Application

Dilution Ratio	WB 1:500-1:1000,ICC/IF 1:50-1:200,IP 1:20-1:50
Molecular Weight	Calculated MW: 12 kDa; Observed MW: 12 kDa

Antigen Information

Gene Name	CYCS
Alternative Names	CYCS; CYC; Cytochrome c
Gene ID	54205
SwissProt ID	P99999
Immunogen	A synthetic peptide of human Cytochrome C

Background

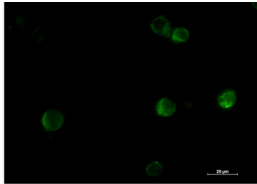
CYCS Electron carrier protein. The oxidized form of the cytochrome c heme group can accept an electron from the heme group of the cytochrome c1 subunit of cytochrome reductase. Cytochrome c then transfers this electron to the cytochrome oxidase

complex, the final protein carrier in the mitochondrial electron-transport chain.

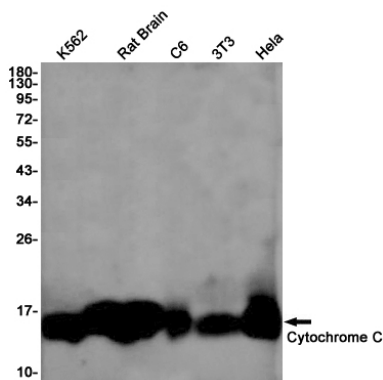
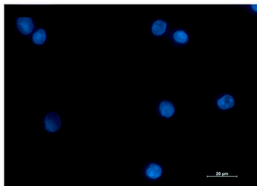
Research Area

Cardiovascular

Image Data



Immunocytochemistry analysis of Cytochrome C (green) in K562 using Cytochrome C antibody, and DAPI (blue).



Western blot analysis of Cytochrome C in K562, rat Brain, C6, 3T3, HeLa lysates using Cytochrome C antibody.