

Product Name: Cytochrome P450 1B1 Rabbit Monoclonal antibody**Catalog #: AMRe01878**

For research use only.

Summary

Description	Recombinant rabbit monoclonal antibody
Host	Rabbit
Application	WB,IHC
Reactivity	Human,Rat
Conjugation	Unconjugated
Modification	Unmodified
Isotype	IgG
Clonality	Monoclonal Antibody
Form	Liquid
Concentration	0.43mg/ml. The concentration of this product may be batch-dependent.
Storage	Aliquot and store at -20°C (valid for 12 months). Avoid freeze/thaw cycles.
Shipping	Ice bags
Buffer	50mM Tris-Glycine(pH 7.4), 0.15M NaCl, 40% Glycerol, 0.01% Sodium azide and 0.05% protective protein
Purification	Affinity Purified

Application

Dilution Ratio	WB 1:500-1:1000,IHC 1:50-1:100
Molecular Weight	Calculated MW: 61 kDa; Observed MW: 61 kDa

Antigen Information

Gene Name	CYP1B1
Alternative Names	CYP1B1; Cytochrome P450 1B1; CYP1B1
Gene ID	1545
SwissProt ID	Q16678
Immunogen	Recombinant protein of human CYP1B1

Background

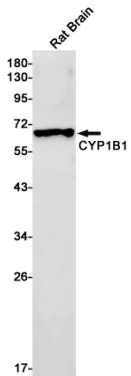
Cytochromes P450 are a group of heme-thiolate monooxygenases. In liver microsomes, this enzyme is involved in an NADPH-dependent electron transport pathway. It oxidizes a variety of structurally unrelated compounds, including steroids, fatty acids,

and xenobiotics.

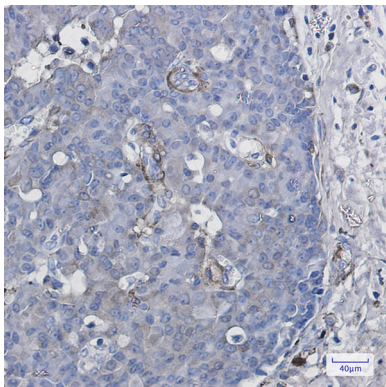
Research Area

Cardiovascular

Image Data



Western blot analysis of CYP1B1 in rat Brain lysates using Cytochrome P450 1B1 antibody.



Immunohistochemistry analysis of paraffin-embedded Human breast cancer using CYP1B1 antibody. High-pressure and temperature Sodium Citrate pH 6.0 was used for antigen retrieval.