
Product Name: Cyclophilin B Rabbit Monoclonal Antibody**Catalog #: AMRe01875**

For research use only.

Summary

Description	Recombinant rabbit monoclonal antibody
Host	Rabbit
Application	WB
Reactivity	Human, Mouse, Rat
Conjugation	Unconjugated
Modification	Unmodified
Isotype	IgG
Clonality	Monoclonal
Form	Liquid
Concentration	0.63mg/ml. The concentration of this product may be batch-dependent.
Storage	Aliquot and store at -20°C (valid for 12 months). Avoid freeze/thaw cycles.
Shipping	Ice bags
Buffer	50mM Tris-Glycine(pH 7.4), 0.15M NaCl, 40% Glycerol, 0.01% Sodium azide and 0.05% protective protein
Purification	Affinity Purification

Application

Dilution Ratio	WB 1:500-1:1000
Molecular Weight	Calculated MW: 24 kDa; Observed MW: 20 kDa

Antigen Information

Gene Name	PPIB
Alternative Names	PPIB; CYPB; Peptidyl-prolyl cis-trans isomerase B; PPlase B; CYP-S1; Cyclophilin B; Rotamase B; S-cyclophilin; SCYLP
Gene ID	5479
SwissProt ID	P23284
Immunogen	A synthetic peptide of human Cyclophilin B

Background

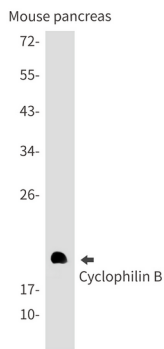
PPlases accelerate the folding of proteins. It catalyzes the cis-trans isomerization of proline imidic peptide bonds in

oligopeptides.

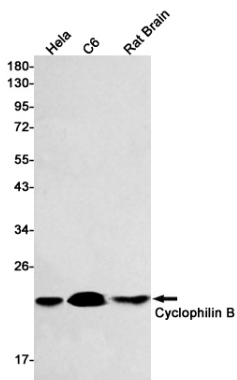
Research Area

Immunology

Image Data



Western blot analysis of Cyclophilin B in mouse pancreas lysates using Cyclophilin B antibody.



Western blot analysis of Cyclophilin B in HeLa, C6, rat Brain lysates using Cyclophilin B antibody.