

Product Name: Cullin 4A/4B Rabbit Monoclonal Antibody**Catalog #: AMRe01865**

For research use only.

Summary

Description	Recombinant rabbit monoclonal antibody
Host	Rabbit
Application	WB,IHC
Reactivity	Human,Hamster,Rat
Conjugation	Unconjugated
Modification	Unmodified
Isotype	IgG
Clonality	Monoclonal
Form	Liquid
Concentration	0.63mg/ml. The concentration of this product may be batch-dependent.
Storage	Aliquot and store at -20°C (valid for 12 months). Avoid freeze/thaw cycles.
Shipping	Ice bags
Buffer	50mM Tris-Glycine(pH 7.4), 0.15M NaCl, 40% Glycerol, 0.01% Sodium azide and 0.05% protective protein
Purification	Affinity Purification

Application

Dilution Ratio	WB 1:500-1:1000,IHC 1:50-1:100
Molecular Weight	Calculated MW: 104 kDa; Observed MW: 88,104 kDa

Antigen Information

Gene Name	CUL4B
Alternative Names	CUL4B; KIAA0695; Cullin-4B; CUL-4B
Gene ID	8450
SwissProt ID	Q13620
Immunogen	A synthetic peptide of human Cullin 4B

Background

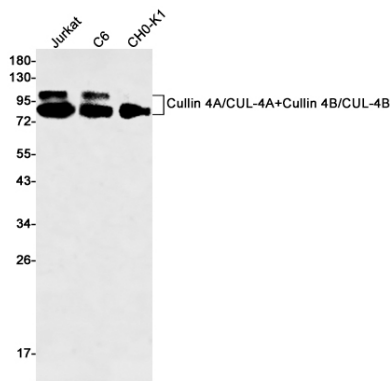
Core component of multiple cullin-RING-based E3 ubiquitin-protein ligase complexes which mediate the ubiquitination and subsequent proteasomal degradation of target proteins. The functional specificity of the E3 ubiquitin-protein ligase complex

depends on the variable substrate recognition subunit. CUL4B may act within the complex as a scaffold protein, contributing to catalysis through positioning of the substrate and the ubiquitin-conjugating enzyme. Plays a role as part of the E3 ubiquitin-protein ligase complex in polyubiquitination of CDT1, histone H2A, histone H3 and histone H4 in response to radiation-induced DNA damage. Targeted to UV damaged chromatin by DDB2 and may be important for DNA repair and DNA replication. Required for ubiquitination of cyclin E, and consequently, normal G1 cell cycle progression. Regulates the mammalian target-of-rapamycin (mTOR) pathway involved in control of cell growth, size and metabolism. Specific CUL4B regulation of the mTORC1-mediated pathway is dependent upon 26S proteasome function and requires interaction between CUL4B and MLST8.

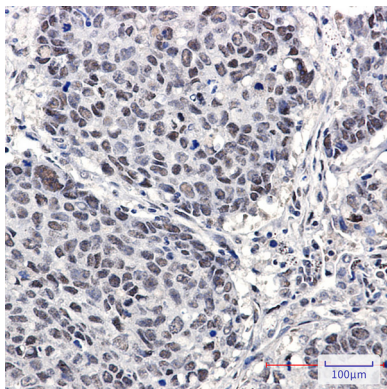
Research Area

Cell Biology

Image Data



Western blot analysis of Cullin 4A/CUL4A+Cullin 4B/CUL4B in Jurkat, C6, CHO-K1 lysates using Cullin 4A/4B antibody.



Immunohistochemistry analysis of paraffin-embedded Human lung cancer using Cullin 4A/B antibody. High-pressure and temperature Sodium Citrate pH 6.0 was used for antigen retrieval.