
Product Name: Cullin 3 Rabbit Monoclonal antibody**Catalog #: AMRe01864**

For research use only.

Summary

| | |
|----------------------|--|
| Description | Recombinant rabbit monoclonal antibody |
| Host | Rabbit |
| Application | WB,IP |
| Reactivity | Human,Mouse |
| Conjugation | Unconjugated |
| Modification | Unmodified |
| Isotype | IgG |
| Clonality | Monoclonal Antibody |
| Form | Liquid |
| Concentration | |
| Storage | Aliquot and store at -20°C (valid for 12 months). Avoid freeze/thaw cycles. |
| Shipping | Ice bags |
| Buffer | 50mM Tris-Glycine(pH 7.4), 0.15M NaCl, 40% Glycerol, 0.01% Sodium azide and 0.05% protective protein |
| Purification | Affinity Purified |

Application

| | |
|-------------------------|--|
| Dilution Ratio | WB 1:500-1:1000,IP 1:20-1:50 |
| Molecular Weight | Calculated MW: 89 kDa; Observed MW: 89 kDa |

Antigen Information

| | |
|--------------------------|---------------------------------------|
| Gene Name | CUL3 |
| Alternative Names | CUL3; KIAA0617; Cullin-3; CUL-3 |
| Gene ID | 8452 |
| SwissProt ID | Q13618 |
| Immunogen | A synthetic peptide of human Cullin 3 |

Background

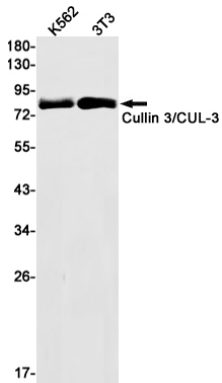
Core component of multiple cullin-RING-based BCR (BTB-CUL3-RBX1) E3 ubiquitin-protein ligase complexes which mediate the ubiquitination and subsequent proteasomal degradation of target proteins. As a scaffold protein may contribute to

catalysis through positioning of the substrate and the ubiquitin-conjugating enzyme.

Research Area

Cell Biology

Image Data



Western blot analysis of Cullin 3/CUL3 in K562, 3T3 lysates using Cullin 3 antibody.