

Product Name: Cullin 3 Rabbit Monoclonal Antibody**Catalog #: AMRe01863**

For research use only.

Summary

Description	Recombinant rabbit monoclonal antibody
Host	Rabbit
Application	WB,IP
Reactivity	Human,Mouse,Rat
Conjugation	Unconjugated
Modification	Unmodified
Isotype	IgG
Clonality	Monoclonal
Form	Liquid
Concentration	0.32mg/ml. The concentration of this product may be batch-dependent.
Storage	Aliquot and store at -20°C (valid for 12 months). Avoid freeze/thaw cycles.
Shipping	Ice bags
Buffer	50mM Tris-Glycine(pH 7.4), 0.15M NaCl, 40% Glycerol, 0.01% Sodium azide and 0.05% protective protein
Purification	Affinity Purification

Application

Dilution Ratio	WB 1:500-1:1000,IP 1:20-1:50
Molecular Weight	Calculated MW: 89 kDa; Observed MW: 89 kDa

Antigen Information

Gene Name	CUL3
Alternative Names	CUL3; KIAA0617; Cullin-3; CUL-3
Gene ID	8452
SwissProt ID	Q13618
Immunogen	A synthetic peptide of human Cullin 3

Background

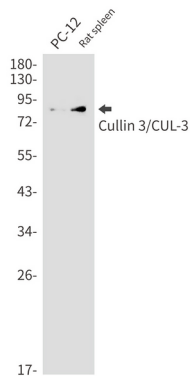
Core component of multiple cullin-RING-based BCR (BTB-CUL3-RBX1) E3 ubiquitin-protein ligase complexes which mediate the ubiquitination and subsequent proteasomal degradation of target proteins. As a scaffold protein may contribute to

catalysis through positioning of the substrate and the ubiquitin-conjugating enzyme.

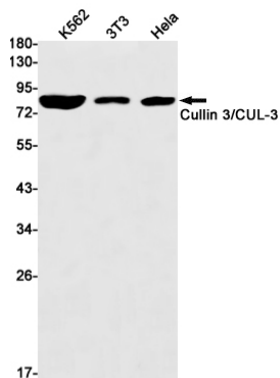
Research Area

Cell Biology

Image Data



Western blot analysis of Cullin 3/CUL3 in PC-12, rat spleen lysates using Cullin 3 antibody.



Western blot analysis of Cullin 3/CUL3 in K562, 3T3, HeLa lysates using Cullin 3/CUL3 antibody.