

---

**Product Name: CTCF Rabbit Monoclonal Antibody****Catalog #: AMRe01857**

For research use only.

**Summary**

<b>Description</b>	Recombinant rabbit monoclonal antibody
<b>Host</b>	Rabbit
<b>Application</b>	WB,IHC,IF,ELISA
<b>Reactivity</b>	Human,Mouse,Rat
<b>Conjugation</b>	Unconjugated
<b>Modification</b>	Unmodified
<b>Isotype</b>	IgG
<b>Clonality</b>	Monoclonal
<b>Form</b>	Liquid
<b>Concentration</b>	0.3mg/ml. The concentration of this product may be batch-dependent.
<b>Storage</b>	Aliquot and store at -20°C (valid for 12 months). Avoid freeze/thaw cycles.
<b>Shipping</b>	Ice bags
<b>Buffer</b>	50mM Tris-Glycine(pH 7.4), 0.15M NaCl, 40% Glycerol, 0.01% Sodium azide and 0.05% protective protein
<b>Purification</b>	Affinity Purification

**Application**

<b>Dilution Ratio</b>	IHC 1:2000-1:10000;WB 1:2000-1:10000;IF 1:200-1:1000;ELISA 1:5000-1:20000;
<b>Molecular Weight</b>	Calculated MW: 83 kDa; Observed MW: 140 kDa

**Antigen Information**

<b>Gene Name</b>	CTCF
<b>Alternative Names</b>	CTCF; Transcriptional repressor CTCF; 11-zinc finger protein; CCCTC-binding factor; CTCFL paralog
<b>Gene ID</b>	10664
<b>SwissProt ID</b>	P49711
<b>Immunogen</b>	A synthetic peptide of human CTCF

**Background**

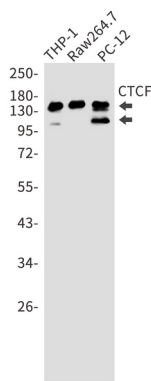
Plays a important role in chromatin remodeling. Can dimerize when it is bound to different DNA sequences, mediating long-

range chromatin looping. Mediates interchromosomal association between IGF2/H19 and WSB1/NF1 and may direct distant DNA segments to a common transcription factory.

## Research Area

Epigenetics and Nuclear Signaling

## Image Data



Western blot analysis of CTCF in THP-1, Raw264.7, PC-12 lysates using CTCF antibody.