
Product Name: CSHL1 Rabbit Monoclonal Antibody**Catalog #: AMRe01855**

For research use only.

Summary

Description	Recombinant rabbit monoclonal antibody
Host	Rabbit
Application	WB,IHC
Reactivity	Human
Conjugation	Unconjugated
Modification	Unmodified
Isotype	IgG
Clonality	Monoclonal
Form	Liquid
Concentration	0.3mg/ml. The concentration of this product may be batch-dependent.
Storage	Aliquot and store at -20°C (valid for 12 months). Avoid freeze/thaw cycles.
Shipping	Ice bags
Buffer	50mM Tris-Glycine(pH 7.4), 0.15M NaCl, 40% Glycerol, 0.01% Sodium azide and 0.05% protective protein
Purification	Affinity Purification

Application

Dilution Ratio	WB 1:500-1:1000,IHC 1:50-1:100
Molecular Weight	Calculated MW: 25 kDa; Observed MW: 25 kDa

Antigen Information

Gene Name	CSHL1
Alternative Names	Lactogen-like; Chorionic somatomammotropin-like
Gene ID	1444
SwissProt ID	Q14406
Immunogen	Recombinant protein of human CSHL1

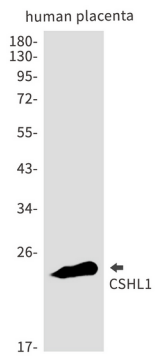
Background

May be a novel gestational hormone required to compensate for absence of other members of the GH/CS cluster during gestation.

Research Area

Signal Transduction

Image Data



Western blot analysis of CSHL1 in Human placenta lysates using CSHL1 antibody.