
Product Name: CRM1 Rabbit Monoclonal Antibody**Catalog #: AMRe01853**

For research use only.

Summary

Description	Recombinant rabbit monoclonal antibody
Host	Rabbit
Application	WB,ICC/IF
Reactivity	Human,Rat
Conjugation	Unconjugated
Modification	Unmodified
Isotype	IgG
Clonality	Monoclonal
Form	Liquid
Concentration	0.63mg/ml. The concentration of this product may be batch-dependent.
Storage	Aliquot and store at -20°C (valid for 12 months). Avoid freeze/thaw cycles.
Shipping	Ice bags
Buffer	50mM Tris-Glycine(pH 7.4), 0.15M NaCl, 40% Glycerol, 0.01% Sodium azide and 0.05% protective protein
Purification	Affinity Purification

Application

Dilution Ratio	WB 1:500-1:1000,ICC/IF 1:50-1:200
Molecular Weight	Calculated MW: 123 kDa; Observed MW: 123 kDa

Antigen Information

Gene Name	XPO1
Alternative Names	XPO1; CRM1; Exportin-1; Exp1; Chromosome region maintenance 1 protein homolog
Gene ID	7514
SwissProt ID	O14980
Immunogen	A synthetic peptide of human CRM1

Background

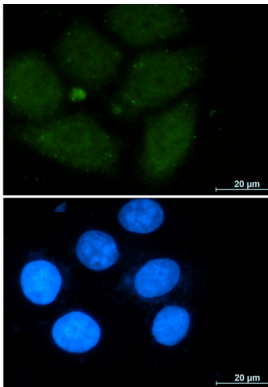
Mediates the nuclear export of cellular proteins (cargos) bearing a leucine-rich nuclear export signal (NES) and of RNAs. In the nucleus, in association with RANBP3, binds cooperatively to the NES on its target protein and to the GTPase RAN in its active

GTP-bound form (Ran-GTP). Docking of this complex to the nuclear pore complex (NPC) is mediated through binding to nucleoporins.

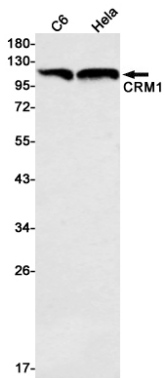
Research Area

Signal Transduction

Image Data



Immunocytochemistry analysis of CRM1 (green) in A549 using CRM1 antibody, and DAPI (blue).



Western blot analysis of CRM1 in C6, HeLa lysates using CRM1 antibody.