

Product Name: CRM1 Rabbit Monoclonal Antibody
Catalog #: AMRe01852



Summary

Production Name	CRM1 Rabbit Monoclonal Antibody
Description	Rabbit Monoclonal antibody
Host	Rabbit
Application	WB,IHC-F,IHC-P,ICC/IF
Reactivity	Human,Mouse,Rat

Performance

Conjugation	Unconjugated
Modification	Unmodified
Isotype	IgG
Clonality	Monoclonal
Form	Liquid
Storage	Store at 4°C short term. Aliquot and store at -20°C long term. Avoid freeze/thaw cycles.
Buffer	50mM Tris-Glycine(pH 7.4), 0.15M NaCl, 40% Glycerol, 0.01% Sodium azide and 0.05% protective protein
Purification	Affinity Purification

Immunogen

Gene Name	XPO1
Alternative Names	XPO1; CRM1; Exportin-1; Exp1; Chromosome region maintenance 1 protein homolog
Gene ID	7514
SwissProt ID	O14980.

Application

Dilution Ratio	WB: 1:500-1:1000 IHC: 1:50-1:100 IF: 1:50-1:200
Molecular Weight	Calculated MW: 123 kDa; Observed MW: 123 kDa

Background

Mediates the nuclear export of cellular proteins (cargos) bearing a leucine-rich nuclear export signal (NES) and of RNAs. In

Product Name: CRM1 Rabbit Monoclonal Antibody
Catalog #: AMRe01852

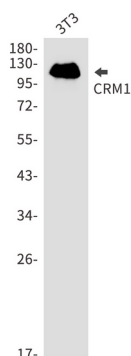


the nucleus, in association with RANBP3, binds cooperatively to the NES on its target protein and to the GTPase RAN in its active GTP-bound form (Ran-GTP). Docking of this complex to the nuclear pore complex (NPC) is mediated through binding to nucleoporins.

Research Area

Signal Transduction

Image Data



Western blot analysis of CRM1 in 3T3 lysates using CRM1 antibody.

Note

For research use only.