

Product Name: Cyclooxygenase 2 Rabbit Monoclonal Antibody
Catalog #: AMRe01845



Summary

Production Name	Cyclooxygenase 2 Rabbit Monoclonal Antibody
Description	Rabbit Monoclonal antibody
Host	Rabbit
Application	WB,IHC-P
Reactivity	Human,Mouse,Rat

Performance

Conjugation	Unconjugated
Modification	Unmodified
Isotype	IgG
Clonality	Monoclonal
Form	Liquid
Storage	Store at 4°C short term. Aliquot and store at -20°C long term. Avoid freeze/thaw cycles.
Buffer	50mM Tris-Glycine(pH 7.4), 0.15M NaCl, 40% Glycerol, 0.01% Sodium azide and 0.05% protective protein
Purification	Affinity Purification

Immunogen

Gene Name	PTGS2
Alternative Names	COX2; COX-2; PHS-2; PGG/HS; PGHS-2; hCox-2; GRIPGHS
Gene ID	5743
SwissProt ID	P35354.

Application

Dilution Ratio	WB: 1:500-1:1000 IHC: 1:50-1:100
Molecular Weight	Calculated MW: 69 kDa; Observed MW: 69 kDa

Product Name: Cyclooxygenase 2 Rabbit Monoclonal Antibody
Catalog #: AMRe01845



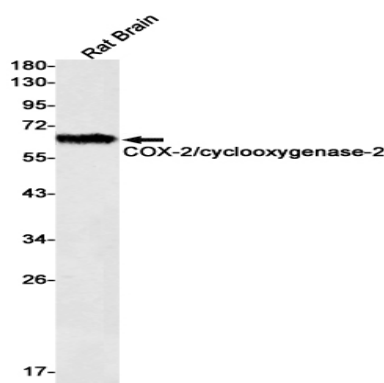
Background

Converts arachidonate to prostaglandin H₂ (PGH₂), a committed step in prostanoid synthesis. Constitutively expressed in some tissues in physiological conditions, such as the endothelium, kidney and brain, and in pathological conditions, such as in cancer. PTGS2 is responsible for production of inflammatory prostaglandins. Up-regulation of PTGS2 is also associated with increased cell adhesion, phenotypic changes, resistance to apoptosis and tumor angiogenesis. In cancer cells, PTGS2 is a key step in the production of prostaglandin E₂ (PGE₂), which plays important roles in modulating motility, proliferation and resistance to apoptosis.

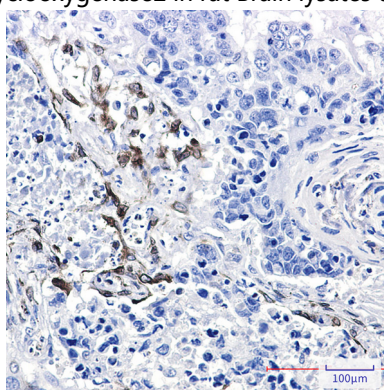
Research Area

Cardiovascular

Image Data



Western blot analysis of COX2/cyclooxygenase2 in rat Brain lysates using Cyclooxygenase 2 antibody.



Immunohistochemistry analysis of paraffin-embedded Human lung cancer using COX2 antibody. High-pressure and temperature Sodium Citrate pH 6.0 was used for antigen retrieval.

Note

For research use only.

**Product Name: Cyclooxygenase 2 Rabbit Monoclonal
Antibody**
Catalog #: AMRe01845

