

---

**Product Name: Cleaved-PARP1 Rabbit Monoclonal Antibody****Catalog #: AMRe01832**

For research use only.

**Summary**

<b>Description</b>	Recombinant rabbit monoclonal antibody
<b>Host</b>	Rabbit
<b>Application</b>	WB
<b>Reactivity</b>	Human
<b>Conjugation</b>	Unconjugated
<b>Modification</b>	Unmodified
<b>Isotype</b>	IgG
<b>Clonality</b>	Monoclonal
<b>Form</b>	Liquid
<b>Concentration</b>	1mg/ml. The concentration of this product may be batch-dependent.
<b>Storage</b>	Aliquot and store at -20°C (valid for 12 months). Avoid freeze/thaw cycles.
<b>Shipping</b>	Ice bags
<b>Buffer</b>	50mM Tris-Glycine(pH 7.4), 0.15M NaCl, 40% Glycerol, 0.01% Sodium azide and 0.05% protective protein
<b>Purification</b>	Affinity Purification

**Application**

<b>Dilution Ratio</b>	WB 1:500-1:1000
<b>Molecular Weight</b>	Calculated MW: 113 kDa; Observed MW: 89 kDa

**Antigen Information**

<b>Gene Name</b>	PARP1 PARP1; ADPRT; PPOL; Poly [ADP-ribose] polymerase 1; PARP-1; ADP-ribosyltransferase
<b>Alternative Names</b>	diphtheria toxin-like 1; ARTD1; NAD(+) ADP-ribosyltransferase 1; ADPRT 1; Poly[ADP-ribose] synthase 1
<b>Gene ID</b>	142
<b>SwissProt ID</b>	P09874
<b>Immunogen</b>	A synthetic peptide of human PARP

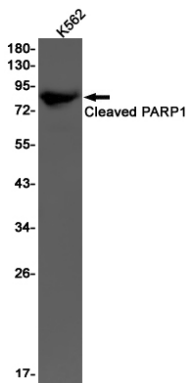
**Background**

Involved in the base excision repair (BER) pathway, by catalyzing the poly(ADP-ribose)ation of a limited number of acceptor proteins involved in chromatin architecture and in DNA metabolism. This modification follows DNA damages and appears as an obligatory step in a detection/signaling pathway leading to the reparation of DNA strand breaks.

## Research Area

Epigenetics and Nuclear Signaling

## Image Data



Western blot analysis of Cleaved- PARP1 in K562 lysates using Cleaved-PARP1 antibody.