
Product Name: Claudin 3 Rabbit Monoclonal Antibody**Catalog #: AMRe01831**

For research use only.

Summary

Description	Recombinant rabbit monoclonal antibody
Host	Rabbit
Application	WB,ICC/IF,IP
Reactivity	Human
Conjugation	Unconjugated
Modification	Unmodified
Isotype	IgG
Clonality	Monoclonal
Form	Liquid
Concentration	
Storage	Aliquot and store at -20°C (valid for 12 months). Avoid freeze/thaw cycles.
Shipping	Ice bags
Buffer	50mM Tris-Glycine(pH 7.4), 0.15M NaCl, 40% Glycerol, 0.01% Sodium azide and 0.05% protective protein
Purification	Affinity Purification

Application

Dilution Ratio	WB 1:500-1:1000,ICC/IF 1:50-1:200,IP 1:20-1:50
Molecular Weight	Calculated MW: 23 kDa; Observed MW: 20 kDa

Antigen Information

Gene Name	CLDN3
Alternative Names	RVP1; HRVP1; C7orf1; CPE-R2; CPETR2
Gene ID	1365
SwissProt ID	O15551
Immunogen	A synthetic peptide of human Claudin 3

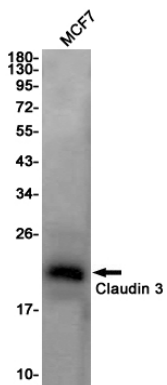
Background

Plays a major role in tight junction-specific obliteration of the intercellular space, through calcium-independent cell-adhesion activity.

Research Area

Cell Biology

Image Data



Western blot analysis of Claudin 3 in MCF-7 lysates using Claudin 3 antibody.