
Product Name: Cellular Apoptosis Susceptibility Rabbit Monoclonal Antibody**Catalog #: AMRe01817**

For research use only.

Summary

Description	Recombinant rabbit monoclonal antibody
Host	Rabbit
Application	WB,IHC,ICC/IF
Reactivity	Human,Mouse
Conjugation	Unconjugated
Modification	Unmodified
Isotype	IgG
Clonality	Monoclonal
Form	Liquid
Concentration	0.5mg/ml. The concentration of this product may be batch-dependent.
Storage	Aliquot and store at -20°C (valid for 12 months). Avoid freeze/thaw cycles.
Shipping	Ice bags
Buffer	50mM Tris-Glycine(pH 7.4), 0.15M NaCl, 40% Glycerol, 0.01% Sodium azide and 0.05% protective protein
Purification	Affinity Purification

Application

Dilution Ratio	WB 1:500-1:1000,IHC 1:50-1:100,ICC/IF 1:50-1:200
Molecular Weight	Calculated MW: 110 kDa; Observed MW: 110 kDa

Antigen Information

Gene Name	CSE1L
Alternative Names	CSE1L; CAS; CSE1; Exp2; Importin-alpha re-exporter; Exportin-2; XPO2
Gene ID	1434
SwissProt ID	P55060
Immunogen	A synthetic peptide of human Cellular Apoptosis Susceptibility

Background

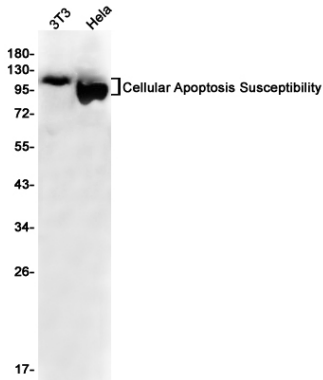
Export receptor for importin-alpha. Mediates importin-alpha re-export from the nucleus to the cytoplasm after import substrates (cargos) have been released into the nucleoplasm. In the nucleus binds cooperatively to importin-alpha and to the

GTPase Ran in its active GTP-bound form.

Research Area

Cell Biology

Image Data



Western blot analysis of ular Apoptosis Susceptibility in 3T3, HeLa lysates using ular Apoptosis Susceptibility antibody.