

Product Name: CDC7 Rabbit Monoclonal Antibody**Catalog #: AMRe01804**

For research use only.

Summary

Description	Recombinant rabbit monoclonal antibody
Host	Rabbit
Application	WB,IP
Reactivity	Human,Hamster
Conjugation	Unconjugated
Modification	Unmodified
Isotype	IgG
Clonality	Monoclonal
Form	Liquid
Concentration	0.5mg/ml. The concentration of this product may be batch-dependent.
Storage	Aliquot and store at -20°C (valid for 12 months). Avoid freeze/thaw cycles.
Shipping	Ice bags
Buffer	50mM Tris-Glycine(pH 7.4), 0.15M NaCl, 40% Glycerol, 0.01% Sodium azide and 0.05% protective protein
Purification	Affinity Purification

Application

Dilution Ratio	WB 1:500-1:1000,IP 1:20-1:50
Molecular Weight	Calculated MW: 64 kDa; Observed MW: 64 kDa

Antigen Information

Gene Name	CDC7
Alternative Names	Cell division cycle 7-related protein kinase; EC 2.7.11.1; CDC7-related kinase; HsCdc7; huCdc7; CDC7; CDC7L1; Hsk1; CDC7 kinase
Gene ID	8317
SwissProt ID	O00311
Immunogen	Recombinant protein of human CDC7

Background

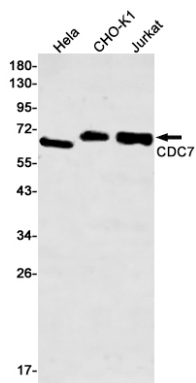
DNA replication in eukaryotic cells is dependent on the phosphorylation of the pre-replicative complex (preRC) at the origin of

replication. Two complexes of proteins mediate this event, the cyclin dependent kinase (CDK) complex, and the Cdc7 kinase-ASK complex. Human Cdc7 kinase consists of 574 amino acids with a molecular weight of 55 kDa. The activity of Cdc7 kinase oscillates during cell cycle. The major targets of Cdc7 kinase are proteins that belong to the MCM complex (mini chromosome maintenance proteins).

Research Area

Cell Biology

Image Data



Western blot analysis of CDC7 in HeLa, CHO-K1, Jurkat lysates using CDC7 antibody.