

Product Name: CD3 epsilon Rabbit Monoclonal Antibody**Catalog #: AMRe01787**

For research use only.

Summary

Description	Recombinant rabbit monoclonal antibody
Host	Rabbit
Application	WB,IP
Reactivity	Human
Conjugation	Unconjugated
Modification	Unmodified
Isotype	IgG
Clonality	Monoclonal
Form	Liquid
Concentration	0.5mg/ml. The concentration of this product may be batch-dependent.
Storage	Aliquot and store at -20°C (valid for 12 months). Avoid freeze/thaw cycles.
Shipping	Ice bags
Buffer	50mM Tris-Glycine(pH 7.4), 0.15M NaCl, 40% Glycerol, 0.01% Sodium azide and 0.05% protective protein
Purification	Affinity Purification

Application

Dilution Ratio	WB 1:500-1:1000,IP 1:20-1:50
Molecular Weight	Calculated MW: 23 kDa; Observed MW: 23 kDa

Antigen Information

Gene Name	CD3E
Alternative Names	CD3E; T3E; T-cell surface glycoprotein CD3 epsilon chain; T-cell surface antigen T3/Leu-4 epsilon chain; CD3e
Gene ID	916
SwissProt ID	P07766
Immunogen	A synthetic peptide of human CD3 epsilon

Background

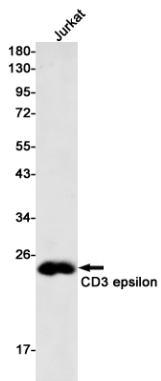
The CD3 complex mediates signal transduction. When T cells encounter antigens via the T cell receptor (TCR), information

about the quantity and quality of antigens is relayed to the intracellular signal transduction machinery . This activation process depends mainly on CD3 (Cluster of Differentiation 3), a multiunit protein complex that directly associates with the TCR. CD3 is composed of four polypeptides: ζ , γ , ϵ and δ .

Research Area

Immunology

Image Data



Western blot analysis of CD3 epsilon in Jurkat lysates using CD3 epsilon antibody.