
Product Name: CD226 Rabbit Monoclonal Antibody**Catalog #: AMRe01781**

For research use only.

Summary

Description	Recombinant rabbit monoclonal antibody
Host	Rabbit
Application	WB
Reactivity	Human
Conjugation	Unconjugated
Modification	Unmodified
Isotype	IgG
Clonality	Monoclonal
Form	Liquid
Concentration	0.5mg/ml. The concentration of this product may be batch-dependent.
Storage	Aliquot and store at -20°C (valid for 12 months). Avoid freeze/thaw cycles.
Shipping	Ice bags
Buffer	50mM Tris-Glycine(pH 7.4), 0.15M NaCl, 40% Glycerol, 0.01% Sodium azide and 0.05% protective protein
Purification	Affinity Purification

Application

Dilution Ratio	WB 1:500-1:1000
Molecular Weight	Calculated MW: 39 kDa; Observed MW: 60-80 kDa

Antigen Information

Gene Name	CD226
Alternative Names	CD226; DNAM1; CD226 antigen; DNAX accessory molecule 1; DNAM-1; CD antigen CD226
Gene ID	10666
SwissProt ID	Q15762
Immunogen	A synthetic peptide of human CD226

Background

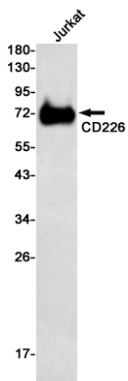
This gene encodes a glycoprotein expressed on the surface of NK cells, platelets, monocytes and a subset of T cells. It is a member of the Ig-superfamily containing 2 Ig-like domains of the V-set. The protein mediates cellular adhesion of platelets and

megakaryocytic cells to vascular endothelial cells. The protein also plays a role in megakaryocytic cell maturation. Alternative splicing results in multiple transcript variants.

Research Area

Immunology

Image Data



Western blot analysis of CD226 in Jurkat lysates using CD226 antibody.