
Product Name: CD22 Rabbit Monoclonal Antibody**Catalog #: AMRe01780**

For research use only.

Summary

Description	Recombinant rabbit monoclonal antibody
Host	Rabbit
Application	WB,ICC/IF,IP
Reactivity	Human
Conjugation	Unconjugated
Modification	Unmodified
Isotype	IgG
Clonality	Monoclonal
Form	Liquid
Concentration	0.63mg/ml. The concentration of this product may be batch-dependent.
Storage	Aliquot and store at -20°C (valid for 12 months). Avoid freeze/thaw cycles.
Shipping	Ice bags
Buffer	50mM Tris-Glycine(pH 7.4), 0.15M NaCl, 40% Glycerol, 0.01% Sodium azide and 0.05% protective protein
Purification	Affinity Purification

Application

Dilution Ratio	WB 1:500-1:1000,ICC/IF 1:50-1:200,IP 1:20-1:50
Molecular Weight	Calculated MW: 95 kDa; Observed MW: 140 kDa

Antigen Information

Gene Name	CD22
Alternative Names	CD22; SIGLEC2; B-cell receptor CD22; B-lymphocyte cell adhesion molecule; BL-CAM; Sialic acid-binding Ig-like lectin 2; Siglec-2; T-cell surface antigen Leu-14; CD antigen CD22
Gene ID	933
SwissProt ID	P20273
Immunogen	A synthetic peptide corresponding to target protein

Background

Acts as a regulator of B cell signaling. CD22 is expressed as both a cytoplasmic and membrane protein during discrete stages of

B cell lymphocyte differentiation. The cytoplasmic form of CD22, expressed early in B cell development, is a useful marker for acute lymphocytic leukemia. The membrane form of CD22 is expressed in mature B cells prior to their differentiation into plasma cells. Alternative splicing results in two different isoforms, CD22 α and CD22 β .

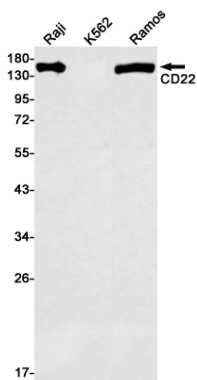
Research Area

Immunology

Image Data



Immunocytochemistry analysis of CD22 (green) in HL-60 using CD22 antibody, and DAPI (blue).



Western blot analysis of CD22 in Raji, K562, Ramos lysates using CD22 antibody.