

---

**Product Name: BTF3 Rabbit Monoclonal Antibody****Catalog #: AMRe01740**

For research use only.

**Summary**

<b>Description</b>	Recombinant rabbit monoclonal antibody
<b>Host</b>	Rabbit
<b>Application</b>	WB,IHC,IP
<b>Reactivity</b>	Human,Mouse,Rat
<b>Conjugation</b>	Unconjugated
<b>Modification</b>	Unmodified
<b>Isotype</b>	IgG
<b>Clonality</b>	Monoclonal
<b>Form</b>	Liquid
<b>Concentration</b>	0.63mg/ml. The concentration of this product may be batch-dependent.
<b>Storage</b>	Aliquot and store at -20°C (valid for 12 months). Avoid freeze/thaw cycles.
<b>Shipping</b>	Ice bags
<b>Buffer</b>	50mM Tris-Glycine(pH 7.4), 0.15M NaCl, 40% Glycerol, 0.01% Sodium azide and 0.05% protective protein
<b>Purification</b>	Affinity Purification

**Application**

<b>Dilution Ratio</b>	WB 1:500-1:1000,IHC 1:50-1:100,IP 1:20-1:50
<b>Molecular Weight</b>	Calculated MW: 22 kDa; Observed MW: 22 kDa

**Antigen Information**

<b>Gene Name</b>	BTF3
<b>Alternative Names</b>	NACB; BTF3a; BTF3b; BETA-NAC
<b>Gene ID</b>	689
<b>SwissProt ID</b>	P20290
<b>Immunogen</b>	Recombinant protein of human BTF3

**Background**

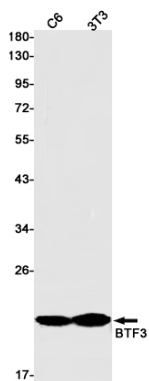
When associated with NACA, prevents inappropriate targeting of non-secretory polypeptides to the endoplasmic reticulum (ER). Binds to nascent polypeptide chains as they emerge from the ribosome and blocks their interaction with the signal

recognition particle (SRP), which normally targets nascent secretory peptides to the ER. BTF3 is also a general transcription factor that can form a stable complex with RNA polymerase II. Required for the initiation of transcription.

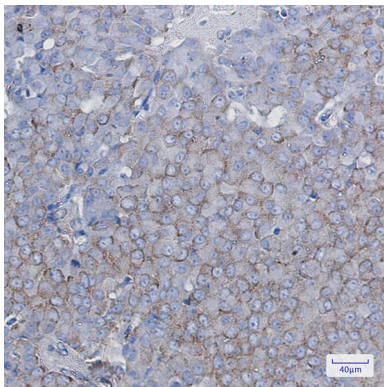
## Research Area

Immunology

## Image Data



Western blot analysis of BTF3 in C6, 3T3 lysates using BTF3 antibody.



Immunohistochemistry analysis of paraffin-embedded Human breast cancer using BTF3 antibody. High-pressure and temperature Sodium Citrate pH 6.0 was used for antigen retrieval.