

Product Name: BRG1 Rabbit Monoclonal Antibody**Catalog #: AMRe01739**

For research use only.

Summary

Description	Recombinant rabbit monoclonal antibody
Host	Rabbit
Application	WB,IHC,ICC/IF,IP,ChIP
Reactivity	Human,Mouse,Rat
Conjugation	Unconjugated
Modification	Unmodified
Isotype	IgG
Clonality	Monoclonal
Form	Liquid
Concentration	0.32mg/ml. The concentration of this product may be batch-dependent.
Storage	Aliquot and store at -20°C (valid for 12 months). Avoid freeze/thaw cycles.
Shipping	Ice bags
Buffer	50mM Tris-Glycine(pH 7.4), 0.15M NaCl, 40% Glycerol, 0.01% Sodium azide and 0.05% protective protein
Purification	Affinity Purification

Application

Dilution Ratio	WB 1:500-1:1000,IHC 1:50-1:100,ICC/IF 1:50-1:200,IP 1:20-1:50,ChIP 1:20
Molecular Weight	Calculated MW: 181 kDa; Observed MW: 220 kDa

Antigen Information

Gene Name	Smarca4
Alternative Names	Brg1; BAF190A; SW1/SNF; HP1-BP72; SNF2beta; b2b692Clo; b2b508.1Clo
Gene ID	20586.0
SwissProt ID	Q3TKT4
Immunogen	A synthetic peptide of mouse BRG1

Background

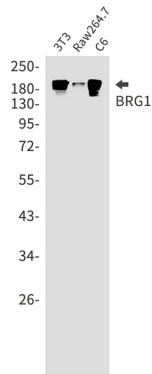
Involved in transcriptional activation and repression of select genes by chromatin remodeling (alteration of DNA-nucleosome topology). Component of SWI/SNF chromatin remodeling complexes that carry out key enzymatic activities, changing

chromatin structure by altering DNA-histone contacts within a nucleosome in an ATP-dependent manner.

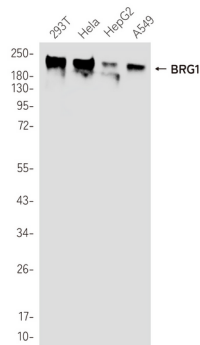
Research Area

Neuroscience

Image Data



Western blot analysis of BRG1 in 3T3, Raw264.7, C6 lysates using BRG1 antibody.



Western blot analysis of BRG1 in 293T, Hela, HepG2, A549 lysates using BRG1 antibody.