

Product Name: BRAT1 Rabbit Monoclonal Antibody**Catalog #: AMRe01735**

For research use only.

Summary

Description	Recombinant rabbit monoclonal antibody
Host	Rabbit
Application	WB, ICC/IF, IP
Reactivity	Human
Conjugation	Unconjugated
Modification	Unmodified
Isotype	IgG
Clonality	Monoclonal
Form	Liquid
Concentration	0.3mg/ml. The concentration of this product may be batch-dependent.
Storage	Aliquot and store at -20°C (valid for 12 months). Avoid freeze/thaw cycles.
Shipping	Ice bags
Buffer	50mM Tris-Glycine(pH 7.4), 0.15M NaCl, 40% Glycerol, 0.01% Sodium azide and 0.05% protective protein
Purification	Affinity Purification

Application

Dilution Ratio	WB 1:500-1:1000, ICC/IF 1:50-1:200, IP 1:20-1:50
Molecular Weight	Calculated MW: 88 kDa; Observed MW: 88 kDa

Antigen Information

Gene Name	BRAT1
Alternative Names	BRCA1-associated ATM activator 1; BRCA1-associated protein required for ATM activation protein 1
Gene ID	221927
SwissProt ID	Q6PJG6
Immunogen	Recombinant protein of human BRAT1

Background

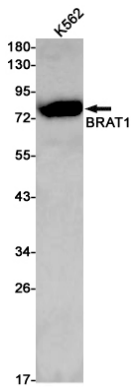
Involved in DNA damage response; activates kinases ATM, SMC1A and PRKDC by modulating their phosphorylation status

following ionizing radiation (IR) stress (PubMed:16452482, PubMed:22977523). Plays a role in regulating mitochondrial function and cell proliferation (PubMed:25070371). Required for protein stability of MTOR and MTOR-related proteins, and cell cycle progress by growth factors (PubMed:25657994).

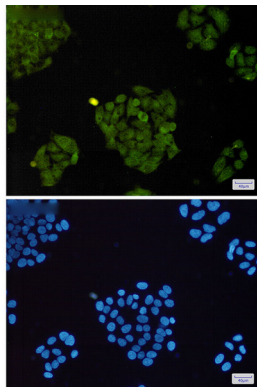
Research Area

Epigenetics and Nuclear Signaling

Image Data



Western blot analysis of BRAT1 in K562 lysates using BRAT1 antibody.



Immunocytochemistry analysis of BRAT1 (green) in HeLa using BRAT1 antibody, and DAPI (blue)