

Product Name: BMP2 Rabbit Monoclonal Antibody**Catalog #: AMRe01730**

For research use only.

Summary

Description	Recombinant rabbit monoclonal antibody
Host	Rabbit
Application	WB, ICC/IF
Reactivity	Human
Conjugation	Unconjugated
Modification	Unmodified
Isotype	IgG
Clonality	Monoclonal
Form	Liquid
Concentration	0.3mg/ml. The concentration of this product may be batch-dependent.
Storage	Aliquot and store at -20°C (valid for 12 months). Avoid freeze/thaw cycles.
Shipping	Ice bags
Buffer	50mM Tris-Glycine(pH 7.4), 0.15M NaCl, 40% Glycerol, 0.01% Sodium azide and 0.05% protective protein
Purification	Affinity Purification

Application

Dilution Ratio	WB 1:500-1:1000, ICC/IF 1:50-1:200
Molecular Weight	Calculated MW: 45 kDa; Observed MW: 30 kDa

Antigen Information

Gene Name	BMP2
Alternative Names	BMP2; BMP2A; Bone morphogenetic protein 2; BMP-2; Bone morphogenetic protein 2A; BMP-2A
Gene ID	650
SwissProt ID	P12643
Immunogen	Recombinant protein of human BMP2

Background

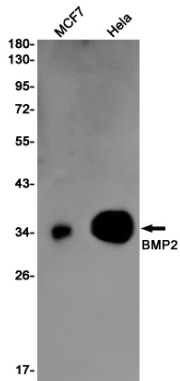
Bone morphogenic proteins (BMPs) are members of the TGF β superfamily. BMPs are involved in the induction of cartilage and

bone formation. Induces cartilage and bone formation.

Research Area

Cancer

Image Data



Western blot analysis of BMP2 in MCF-7, HeLa lysates using BMP2 antibody.