

Product Name: beta III Tubulin Rabbit Monoclonal Antibody**Catalog #: AMRe01724**

For research use only.

Summary

Description	Recombinant rabbit monoclonal antibody
Host	Rabbit
Application	WB,IHC,ICC/IF,IP
Reactivity	Human,Mouse,Rat
Conjugation	Unconjugated
Modification	Unmodified
Isotype	IgG
Clonality	Monoclonal
Form	Liquid
Concentration	0.39mg/ml. The concentration of this product may be batch-dependent.
Storage	Aliquot and store at -20°C (valid for 12 months). Avoid freeze/thaw cycles.
Shipping	Ice bags
Buffer	50mM Tris-Glycine(pH 7.4), 0.15M NaCl, 40% Glycerol, 0.01% Sodium azide and 0.05% protective protein
Purification	Affinity Purification

Application

Dilution Ratio	WB 1:500-1:1000,IHC 1:50-1:100,ICC/IF 1:50-1:200,IP 1:20-1:50
Molecular Weight	Calculated MW: 50 kDa; Observed MW: 50 kDa

Antigen Information

Gene Name	TUBB3
Alternative Names	TUBB3; TUBB4; Tubulin beta-3 chain; Tubulin beta-4 chain; Tubulin beta-III
Gene ID	10381
SwissProt ID	Q13509
Immunogen	A synthetic peptide of human beta III Tubulin

Background

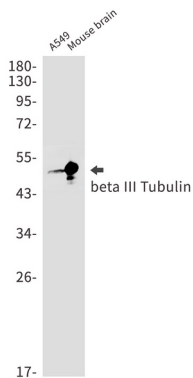
TUBB3 Tubulin is the major constituent of microtubules. It binds two moles of GTP, one at an exchangeable site on the beta chain and one at a non-exchangeable site on the alpha-chain. TUBB3 plays a critical role in proper axon guidance and

maintainance.

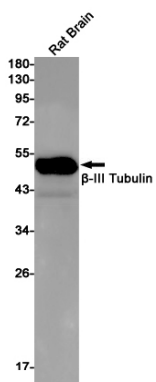
Research Area

Signal Transduction

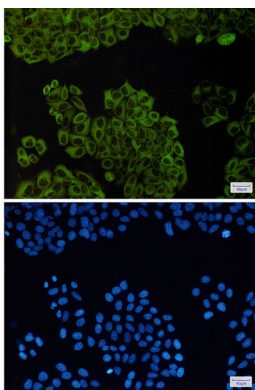
Image Data



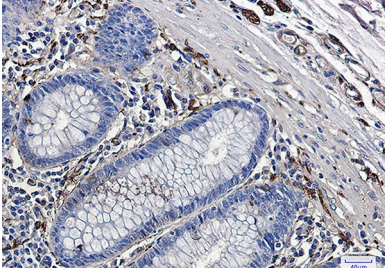
Western blot analysis of beta III Tubulin in A549, mouse brain lysates using beta III Tubulin antibody.



Western blot analysis of beta III Tubulin in rat Brain lysates using beta III Tubulin antibody.



Immunocytochemistry analysis of beta III Tubulin(green) in HeLa using beta III Tubulin antibody, and DAPI(blue)



Immunohistochemistry analysis of paraffin-embedded Human colon cancer using beta III Tubulin antibody. High-pressure and temperature Sodium Citrate pH 6.0 was used for antigen retrieval.