

Product Name: BAP31 Rabbit Monoclonal Antibody**Catalog #: AMRe01716**

For research use only.

Summary

Description	Recombinant rabbit monoclonal antibody
Host	Rabbit
Application	WB,IHC,ICC/IF
Reactivity	Human,Mouse
Conjugation	Unconjugated
Modification	Unmodified
Isotype	IgG
Clonality	Monoclonal
Form	Liquid
Concentration	0.51mg/ml. The concentration of this product may be batch-dependent.
Storage	Aliquot and store at -20°C (valid for 12 months). Avoid freeze/thaw cycles.
Shipping	Ice bags
Buffer	50mM Tris-Glycine(pH 7.4), 0.15M NaCl, 40% Glycerol, 0.01% Sodium azide and 0.05% protective protein
Purification	Affinity Purification

Application

Dilution Ratio	WB 1:500-1:1000,IHC 1:50-1:100,ICC/IF 1:50-1:200
Molecular Weight	Calculated MW: 28 kDa; Observed MW: 28 kDa

Antigen Information

Gene Name	BCAP31
Alternative Names	BCAP31; BAP31; DXS1357E; B-cell receptor-associated protein 31; BCR-associated protein 31; Bap31; 6C6-AG tumor-associated antigen; Protein CDM; p28
Gene ID	10134
SwissProt ID	P51572
Immunogen	A synthetic peptide of human BAP31

Background

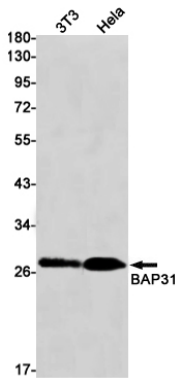
May play a role in anterograde transport of membrane proteins from the endoplasmic reticulum to the Golgi. May be involved

in CASP8-mediated apoptosis.

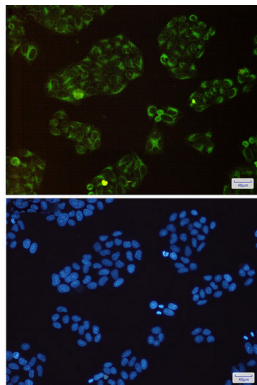
Research Area

Cell Biology

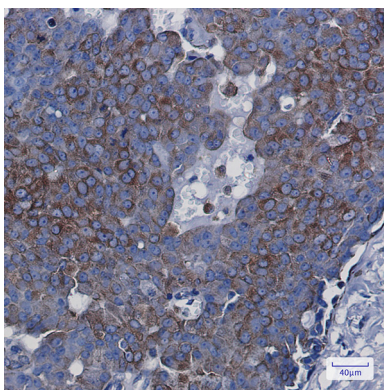
Image Data



Western blot analysis of BAP31 in K562, HeLa lysates using BAP31 antibody.



Immunocytochemistry analysis of BAP31(green) in HeLa using BAP31 antibody, and DAPI(blue)



Immunohistochemistry analysis of paraffin-embedded Human breast cancer using BAP31 antibody. High-pressure and temperature Sodium Citrate pH 6.0 was used for antigen retrieval.