

---

**Product Name: ATG16L1 Rabbit Monoclonal antibody****Catalog #: AMRe01689**

For research use only.

**Summary**

<b>Description</b>	Recombinant rabbit monoclonal antibody
<b>Host</b>	Rabbit
<b>Application</b>	WB
<b>Reactivity</b>	Human, Mouse, Rat
<b>Conjugation</b>	Unconjugated
<b>Modification</b>	Unmodified
<b>Isotype</b>	IgG
<b>Clonality</b>	Monoclonal Antibody
<b>Form</b>	Liquid
<b>Concentration</b>	0.18mg/ml. The concentration of this product may be batch-dependent.
<b>Storage</b>	Aliquot and store at -20°C (valid for 12 months). Avoid freeze/thaw cycles.
<b>Shipping</b>	Ice bags
<b>Buffer</b>	50mM Tris-Glycine(pH 7.4), 0.15M NaCl, 40% Glycerol, 0.01% Sodium azide and 0.05% protective protein
<b>Purification</b>	Affinity Purified

**Application**

<b>Dilution Ratio</b>	WB 1:500-1:1000
<b>Molecular Weight</b>	Calculated MW: 68 kDa; Observed MW: 68 kDa

**Antigen Information**

<b>Gene Name</b>	ATG16L1
<b>Alternative Names</b>	ATG16L1; APG16L; Autophagy-related protein 16-1; APG16-like 1
<b>Gene ID</b>	55054
<b>SwissProt ID</b>	Q676U5
<b>Immunogen</b>	Recombinant protein of human ATG16L1

**Background**

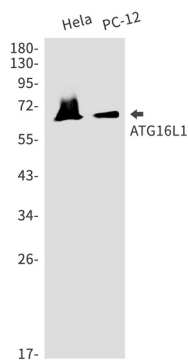
Plays an essential role in autophagy: interacts with ATG12-ATG5 to mediate the conjugation of phosphatidylethanolamine (PE) to LC3 (MAP1LC3A, MAP1LC3B or MAP1LC3C), to produce a membrane-bound activated form of LC3 named LC3-II. Thereby,

controls the elongation of the nascent autophagosomal membrane.

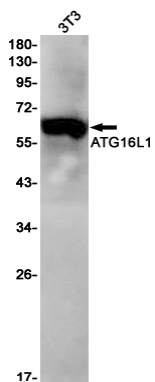
## Research Area

Cell Biology

## Image Data



Western blot analysis of ATG16L1 in HeLa, PC-12 lysates using ATG16L1 antibody.



Western blot analysis of ATG16L1 in 3T3 lysates using ATG16L1 antibody.