
Product Name: ASS1 Rabbit Monoclonal antibody**Catalog #: AMRe01685**

For research use only.

Summary

Description	Recombinant rabbit monoclonal antibody
Host	Rabbit
Application	WB,IHC,ICC/IF,IP
Reactivity	Human,Rat
Conjugation	Unconjugated
Modification	Unmodified
Isotype	IgG
Clonality	Monoclonal Antibody
Form	Liquid
Concentration	0.2mg/ml. The concentration of this product may be batch-dependent.
Storage	Aliquot and store at -20°C (valid for 12 months). Avoid freeze/thaw cycles.
Shipping	Ice bags
Buffer	50mM Tris-Glycine(pH 7.4), 0.15M NaCl, 40% Glycerol, 0.01% Sodium azide and 0.05% protective protein
Purification	Affinity Purified

Application

Dilution Ratio	WB 1:500-1:1000,IHC 1:50-1:100,ICC/IF 1:50-1:200,IP 1:20-1:50
Molecular Weight	Calculated MW: 47 kDa; Observed MW: 47 kDa

Antigen Information

Gene Name	ASS1
Alternative Names	Argininosuccinate synthase 1; ASS; ass1; ASSA; Citrulline aspartate ligase; CTLN1
Gene ID	445
SwissProt ID	P00966
Immunogen	A synthetic peptide of human ASS1

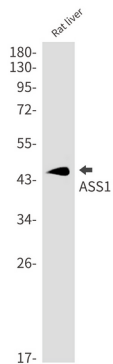
Background

Amino-acid biosynthesis; L-arginine biosynthesis; L-arginine from L-ornithine and carbamoyl phosphate: step 2/3. Nitrogen metabolism; urea cycle; (N(omega)-L-arginino)succinate from L-aspartate and L-citrulline: step 1/1.

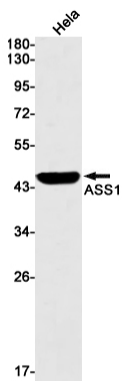
Research Area

Signal Transduction

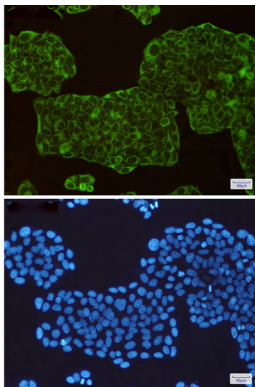
Image Data



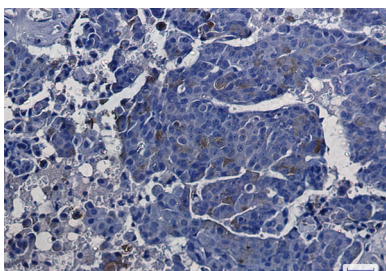
Western blot analysis of ASS1 in rat liver lysates using ASS1 antibody.



Western blot analysis of ASS1 in HeLa lysates using ASS1 antibody.



Immunocytochemistry analysis of ASS1(green) in HeLa using ASS1 antibody, and DAPI(blue)



Immunohistochemistry analysis of paraffin-embedded Human breast cancer using ASS1 antibody. High-pressure and temperature Sodium Citrate pH 6.0 was used for antigen retrieval.

