
Product Name: ASH2L Rabbit Monoclonal Antibody**Catalog #: AMRe01682**

For research use only.

Summary

Description	Recombinant rabbit monoclonal antibody
Host	Rabbit
Application	WB,IHC,ICC/IF
Reactivity	Human,Mouse,Rat
Conjugation	Unconjugated
Modification	Unmodified
Isotype	IgG
Clonality	Monoclonal
Form	Liquid
Concentration	0.51mg/ml. The concentration of this product may be batch-dependent.
Storage	Aliquot and store at -20°C (valid for 12 months). Avoid freeze/thaw cycles.
Shipping	Ice bags
Buffer	50mM Tris-Glycine(pH 7.4), 0.15M NaCl, 40% Glycerol, 0.01% Sodium azide and 0.05% protective protein
Purification	Affinity Purification

Application

Dilution Ratio	WB 1:500-1:1000,IHC 1:50-1:100,ICC/IF 1:50-1:200
Molecular Weight	Calculated MW: 69 kDa; Observed MW: 80 kDa

Antigen Information

Gene Name	ASH2L
Alternative Names	ASH2; Bre2; ASH2L1; ASH2L2
Gene ID	9070
SwissProt ID	Q9UBL3
Immunogen	A synthetic peptide of human ASH2L

Background

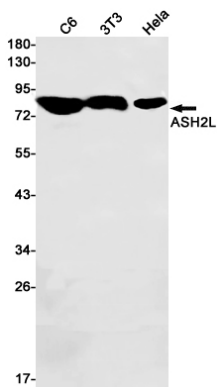
Component of the Set1/Ash2 histone methyltransferase (HMT) complex, a complex that specifically methylates 'Lys-4' of histone H3, but not if the neighboring 'Lys-9' residue is already methylated. As part of the MLL1/MLL complex it is involved in

methylation and dimethylation at 'Lys-4' of histone H3. May function as a transcriptional regulator. May play a role in hematopoiesis.

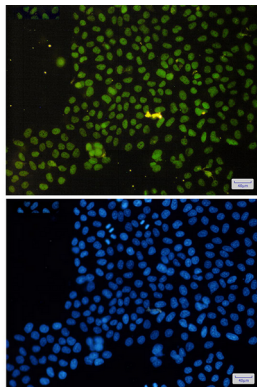
Research Area

Epigenetics and Nuclear Signaling

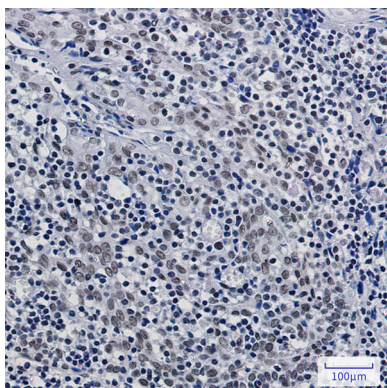
Image Data



Western blot analysis of ASH2L in C6, 3T3, HeLa lysates using ASH2L antibody.



Immunocytochemistry analysis of ASH2L(green) in HeLa using ASH2L antibody, and DAPI(blue)



Immunohistochemistry analysis of paraffin-embedded Human tonsil using ASH2L antibody. High-pressure and temperature Sodium Citrate pH 6.0 was used for antigen retrieval.