
Product Name: AS160 Rabbit Monoclonal Antibody**Catalog #: AMRe01681**

For research use only.

Summary

| | |
|----------------------|--|
| Description | Recombinant rabbit monoclonal antibody |
| Host | Rabbit |
| Application | WB,IP |
| Reactivity | Human |
| Conjugation | Unconjugated |
| Modification | Unmodified |
| Isotype | IgG |
| Clonality | Monoclonal |
| Form | Liquid |
| Concentration | 0.5mg/ml. The concentration of this product may be batch-dependent. |
| Storage | Aliquot and store at -20°C (valid for 12 months). Avoid freeze/thaw cycles. |
| Shipping | Ice bags |
| Buffer | 50mM Tris-Glycine(pH 7.4), 0.15M NaCl, 40% Glycerol, 0.01% Sodium azide and 0.05% protective protein |
| Purification | Affinity Purification |

Application

| | |
|-------------------------|--|
| Dilution Ratio | WB 1:500-1:1000,IP 1:20-1:50 |
| Molecular Weight | Calculated MW: 147 kDa; Observed MW: 160 kDa |

Antigen Information

| | |
|--------------------------|---|
| Gene Name | TBC1D4 |
| Alternative Names | AS160; NIDDM5 |
| Gene ID | 9882 |
| SwissProt ID | O60343 |
| Immunogen | A synthetic peptide corresponding to target protein |

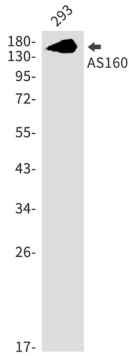
Background

May act as a GTPase-activating protein for RAB2A, RAB8A, RAB10 and RAB14. Isoform 2 promotes insulin-induced glucose transporter SLC2A4/GLUT4 translocation at the plasma membrane, thus increasing glucose uptake.

Research Area

Signal Transduction

Image Data



Western blot analysis of AS160 in 293 lysates using AS160 antibody.