
Product Name: ERAP1 Rabbit Monoclonal antibody**Catalog #: AMRe01679**

For research use only.

Summary

Description	Recombinant rabbit monoclonal antibody
Host	Rabbit
Application	WB,IHC
Reactivity	Human,Rat
Conjugation	Unconjugated
Modification	Unmodified
Isotype	IgG
Clonality	Monoclonal Antibody
Form	Liquid
Concentration	0.28mg/ml. The concentration of this product may be batch-dependent.
Storage	Aliquot and store at -20°C (valid for 12 months). Avoid freeze/thaw cycles.
Shipping	Ice bags
Buffer	50mM Tris-Glycine(pH 7.4), 0.15M NaCl, 40% Glycerol, 0.01% Sodium azide and 0.05% protective protein
Purification	Affinity Purified

Application

Dilution Ratio	WB 1:500-1:1000,IHC 1:50-1:100
Molecular Weight	Calculated MW: 107 kDa; Observed MW: 107 kDa

Antigen Information

Gene Name	ERAP1 ERAP1; APPILS; ARTS1; KIAA0525; Endoplasmic reticulum aminopeptidase 1; ARTS-1;
Alternative Names	Adipocyte-derived leucine aminopeptidase; A-LAP; Aminopeptidase PILS; Puromycin-insensitive leucyl-specific aminopeptidase; PILS-AP; Type 1 tumor necrosis facto
Gene ID	51752
SwissProt ID	Q9NZ08
Immunogen	A synthetic peptide of human ARTS1

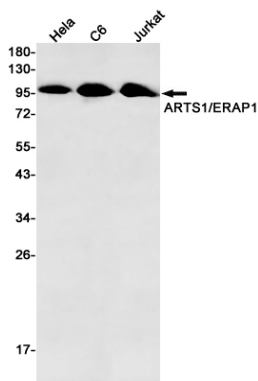
Background

Aminopeptidase that plays a central role in peptide trimming, a step required for the generation of most HLA class I-binding peptides. Peptide trimming is essential to customize longer precursor peptides to fit them to the correct length required for presentation on MHC class I molecules. Strongly prefers substrates 9-16 residues long.

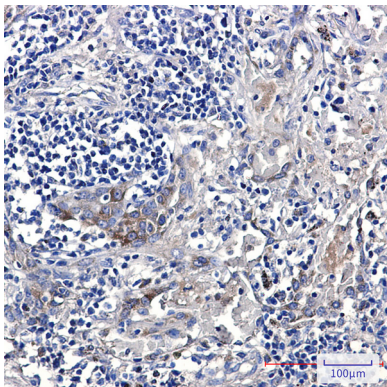
Research Area

Immunology

Image Data



Western blot analysis of ARTS1/ERAP1 in HeLa, C6, Jurkat lysates using ERAP1 antibody.



Immunohistochemistry analysis of paraffin-embedded Human lung cancer using ARTS1 antibody. High-pressure and temperature Sodium Citrate pH 6.0 was used for antigen retrieval.